

DATASHEET

GNG8 Rabbit Polyclonal Antibody

CAT. NO. APA08262

KEY FEATURES

Target	GNG8	Source / Host	Rabbit
Reactivity	Human, Mouse, Rat, Bovine, Dog, Monkey, Pig, Sheep	Clonality	Polyclonal
Applications	WB	Conjugation	Unconjugated
Form / Buffer	Liquid in 0.42% Potassium phosphate, 0.87% Sodium chloride, pH 7.3, 30% glycerol, and 0.01% sodium azide.		Storage at -20°C

BACKGROUND

Guanine nucleotide-binding proteins (G proteins) are involved as a modulator or transducer in various transmembrane signaling systems. The beta and gamma chains are required for the GTPase activity, for replacement of GDP by GTP, and for G protein-effector interaction.

APPLICATION

To ensure optimal assay performance, AREX recommends conducting reagent titration tailored to each testing system for optimal detection results.

WB	1:500 - 1:1000
----	----------------

*Results are sample-specific. Please refer to your local assay conditions and test parameters for reference.

PRODUCT OVERVIEW

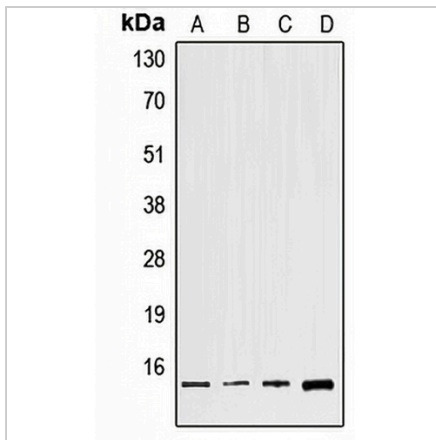
Description	Rabbit polyclonal antibody to GNG8
Specificity	Recognizes endogenous levels of GNG8 protein.
Antibody Type	Primary antibody
Immunogen	KLH-conjugated synthetic peptide encompassing a sequence within the center region of human GNG8. The exact sequence is proprietary.
Purification	The antibody was purified by immunogen affinity chromatography.
Molecular Weight	Predicted: 7 kD; Observed: 7 kD
Form/Buffer	Liquid in 0.42% Potassium phosphate, 0.87% Sodium chloride, pH 7.3, 30% glycerol, and 0.01% sodium azide.
Alternative Names	GNG9; GNGT9; Guanine nucleotide-binding protein G(I)/G(S)/G(O) subunit gamma-8; Gamma-9
Gene Symbol	GNG8
Entrez Gene	94235(Human); 14709(Mouse); 245986(Rat)
SwissProt	Q9UK08(Human); P63078(Mouse); P63077(Rat)

*AREX continuously optimizes our products. Webpage content may not reflect the latest updates. For inquiries, please contact info@arexbio.com or your local distributor.

*Clone Number, Reactivity, Source/Host and Clonality can be found in the product name and Key Features section above.

DATASHEET**GNG8 Rabbit Polyclonal Antibody**

CAT. NO. APA08262

DATA

Western blot analysis of GNG8 expression in HeLa (A), NIH3T3 (B), mouse brain (C), H9C2 (D) whole cell lysates. (Predicted band size: 7 kD; Observed band size: 7 kD)

STORAGE

Store at 4°C short term. For long term storage, store at -20°C, avoiding freeze/thaw cycles.

NOTE

For Research Use Only. Not for diagnostic, therapeutics, prophylactic or in vivo use.