

**DATASHEET**

**Cytoglobin Rabbit Polyclonal Antibody**

CAT. NO. APA08266

**KEY FEATURES**

Target	Cytoglobin	Source / Host	Rabbit
Reactivity	Human, Mouse, Rat	Clonality	Polyclonal
Applications	WB	Conjugation	Unconjugated
Form / Buffer	Liquid in 0.42% Potassium phosphate, 0.87% Sodium chloride, pH 7.3, 30% glycerol, and 0.01% sodium azide.		Storage at -20°C

**BACKGROUND**

Probable multifunctional globin with a hexacoordinated heme iron required for the catalysis of various reactions depending on redox condition of the cell as well as oxygen availability . Has a nitric oxide dioxygenase (NOD) activity and is most probably involved in cell-mediated and oxygen-dependent nitric oxide consumption . By scavenging this second messenger may regulate several biological processes including endothelium-mediated vasodilation and vascular tone . Under normoxic conditions functions as a nitric oxide dioxygenase (NOD) but under hypoxic conditions the globin may switch its function to that of a nitrite (NO<sub>2</sub>) reductase (NiR), generating nitric oxide .

**APPLICATION**

To ensure optimal assay performance, AREX recommends conducting reagent titration tailored to each testing system for optimal detection results.

WB	1:500 - 1:1000
----	----------------

\*Results are sample-specific. Please refer to your local assay conditions and test parameters for reference.

**PRODUCT OVERVIEW**

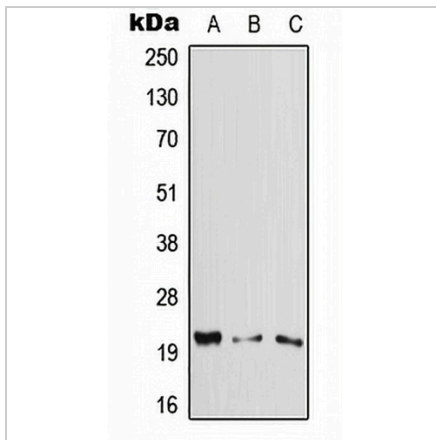
Description	Rabbit polyclonal antibody to Cytoglobin
Specificity	Recognizes endogenous levels of Cytoglobin protein.
Antibody Type	Primary antibody
Immunogen	KLH-conjugated synthetic peptide encompassing a sequence within the center region of human Cytoglobin. The exact sequence is proprietary.
Purification	The antibody was purified by immunogen affinity chromatography.
Molecular Weight	Predicted: 21 kD; Observed: 21 kD
Form/Buffer	Liquid in 0.42% Potassium phosphate, 0.87% Sodium chloride, pH 7.3, 30% glycerol, and 0.01% sodium azide.
Alternative Names	STAP; Cytoglobin; Histoglobin; HGb; Stellate cell activation-associated protein
Gene Symbol	CYGB
Entrez Gene	114757(Human); 114886(Mouse); 170520(Rat)
SwissProt	Q8WWM9(Human); Q9CX80(Mouse); Q921A4(Rat)

\*AREX continuously optimizes our products. Webpage content may not reflect the latest updates. For inquiries, please contact [info@arexbio.com](mailto:info@arexbio.com) or your local distributor.

\*Clone Number, Reactivity, Source/Host and Clonality can be found in the product name and Key Features section above.

**DATASHEET****Cytoglobin Rabbit Polyclonal Antibody**

CAT. NO. APA08266

**DATA**

Western blot analysis of Cytoglobin expression in HeLa (A), Raw264.7 (B), PC12 (C) whole cell lysates. (Predicted band size: 21 kD; Observed band size: 21 kD)

**STORAGE**

Store at 4°C short term. For long term storage, store at -20°C, avoiding freeze/thaw cycles.

**NOTE**

For Research Use Only. Not for diagnostic, therapeutics, prophylactic or in vivo use.