

**DATASHEET**

**ESCO1 Rabbit Polyclonal Antibody**

CAT. NO. APA08268

**KEY FEATURES**

Target	ESCO1	Source / Host	Rabbit
Reactivity	Human, Mouse, Rat	Clonality	Polyclonal
Applications	WB	Conjugation	Unconjugated
Form / Buffer	Liquid in 0.42% Potassium phosphate, 0.87% Sodium chloride, pH 7.3, 30% glycerol, and 0.01% sodium azide.		Storage at -20°C

**BACKGROUND**

Acetyltransferase required for the establishment of sister chromatid cohesion . Couples the processes of cohesion and DNA replication to ensure that only sister chromatids become paired together. In contrast to the structural cohesins, the deposition and establishment factors are required only during S phase. Acts by mediating the acetylation of cohesin component SMC3 .

**APPLICATION**

To ensure optimal assay performance, AREX recommends conducting reagent titration tailored to each testing system for optimal detection results.

WB	1:500 - 1:1000
----	----------------

\*Results are sample-specific. Please refer to your local assay conditions and test parameters for reference.

**PRODUCT OVERVIEW**

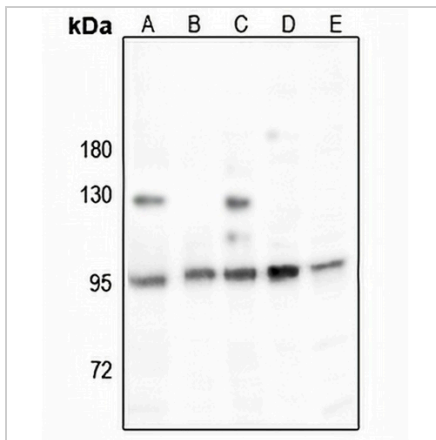
Description	Rabbit polyclonal antibody to ESCO1
Specificity	Recognizes endogenous levels of ESCO1 protein.
Antibody Type	Primary antibody
Immunogen	KLH-conjugated synthetic peptide encompassing a sequence within the N-term region of human ESCO1. The exact sequence is proprietary.
Purification	The antibody was purified by immunogen affinity chromatography.
Molecular Weight	Predicted: 94 kD; Observed: 95 kD
Form/Buffer	Liquid in 0.42% Potassium phosphate, 0.87% Sodium chloride, pH 7.3, 30% glycerol, and 0.01% sodium azide.
Alternative Names	EFO1; KIAA1911; N-acetyltransferase ESCO1; CTF7 homolog 1; Establishment factor-like protein 1; EFO1p; hEFO1; Establishment of cohesion 1 homolog 1; ECO1 homolog 1; ESO1 homolog 1
Gene Symbol	ESCO1
Entrez Gene	114799(Human); 77805(Mouse)
SwissProt	Q5FWF5(Human); Q69Z69(Mouse)

\*AREX continuously optimizes our products. Webpage content may not reflect the latest updates. For inquiries, please contact [info@arexbio.com](mailto:info@arexbio.com) or your local distributor.

\*Clone Number, Reactivity, Source/Host and Clonality can be found in the product name and Key Features section above.

**DATASHEET****ESCO1 Rabbit Polyclonal Antibody**

CAT. NO. APA08268

**DATA**

Western blot analysis of ESCO1 expression in A375 (A), SGC7901 (B), HepG2 (C), AML12 (D), PC12 (E) whole cell lysates. (Predicted band size: 94 kDa; Observed band size: 95 kDa)

**STORAGE**

Store at 4°C short term. For long term storage, store at -20°C, avoiding freeze/thaw cycles.

**NOTE**

For Research Use Only. Not for diagnostic, therapeutics, prophylactic or in vivo use.