

DATASHEET

BATF2 Rabbit Polyclonal Antibody

CAT. NO. APA08269

KEY FEATURES

Target	BATF2	Source / Host	Rabbit
Reactivity	Human, Mouse, Rat	Clonality	Polyclonal
Applications	WB	Conjugation	Unconjugated
Form / Buffer	Liquid in 0.42% Potassium phosphate, 0.87% Sodium chloride, pH 7.3, 30% glycerol, and 0.01% sodium azide.		Storage at -20°C

BACKGROUND

AP-1 family transcription factor that controls the differentiation of lineage-specific cells in the immune system. Following infection, participates in the differentiation of CD8(+) thymic conventional dendritic cells in the immune system. Acts via the formation of a heterodimer with JUN family proteins that recognizes and binds DNA sequence 5'-TGA[CG]TCA-3' and regulates expression of target genes. Selectively suppresses CCN1 transcription and hence blocks the downstream cell proliferation signals produced by CCN1 and inhibits CCN1-induced anchorage-independent growth and invasion in several cancer types, such as breast cancer, malignant glioma and metastatic melanoma. Possibly acts by interfering with AP-1 binding to CCN1 promoter.

APPLICATION

To ensure optimal assay performance, AREX recommends conducting reagent titration tailored to each testing system for optimal detection results.

WB	1:500 - 1:1000
----	----------------

*Results are sample-specific. Please refer to your local assay conditions and test parameters for reference.

PRODUCT OVERVIEW

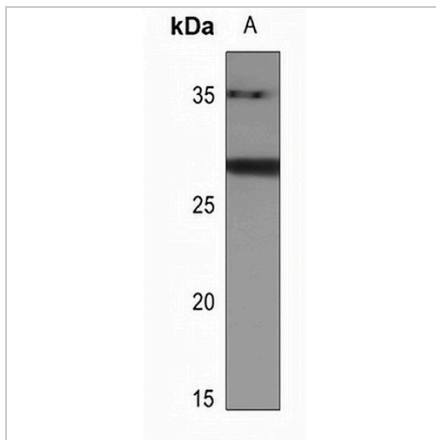
Description	Rabbit polyclonal antibody to BATF2
Specificity	Recognizes endogenous levels of BATF2 protein.
Antibody Type	Primary antibody
Immunogen	KLH-conjugated synthetic peptide encompassing a sequence within the C-term region of human BATF2. The exact sequence is proprietary.
Purification	The antibody was purified by immunogen affinity chromatography.
Molecular Weight	Predicted: 29 kD; Observed: 29 kD
Form/Buffer	Liquid in 0.42% Potassium phosphate, 0.87% Sodium chloride, pH 7.3, 30% glycerol, and 0.01% sodium azide.
Alternative Names	Basic leucine zipper transcriptional factor ATF-like 2; B-ATF-2; Suppressor of AP-1 regulated by IFN; SARI
Gene Symbol	BATF2
Entrez Gene	116071(Human); 74481(Mouse)
SwissProt	Q8N1L9(Human); Q8R1H8(Mouse)

*AREX continuously optimizes our products. Webpage content may not reflect the latest updates. For inquiries, please contact info@arexbio.com or your local distributor.

*Clone Number, Reactivity, Source/Host and Clonality can be found in the product name and Key Features section above.

DATASHEET**BATF2 Rabbit Polyclonal Antibody**

CAT. NO. APA08269

DATA

Western blot analysis of BATF2 expression in MCF7 (A) whole cell lysates. (Predicted band size: 29 kD; Observed band size: 29 kD)

STORAGE

Store at 4°C short term. For long term storage, store at -20°C, avoiding freeze/thaw cycles.

NOTE

For Research Use Only. Not for diagnostic, therapeutics, prophylactic or in vivo use.