

DATASHEET

IL-22RA2 Rabbit Polyclonal Antibody

CAT. NO. APA08270

KEY FEATURES

Target	IL-22RA2	Source / Host	Rabbit
Reactivity	Human, Mouse, Rat	Clonality	Polyclonal
Applications	WB, IF/ICC	Conjugation	Unconjugated
Form / Buffer	Liquid in 0.42% Potassium phosphate, 0.87% Sodium chloride, pH 7.3, 30% glycerol, and 0.01% sodium azide.		Storage at-20°C

BACKGROUND

Isoform 2 is a receptor for IL22. Binds to IL22, prevents interaction with the functional IL-22R complex and blocks the activity of IL22 (in vitro). May play an important role as an IL22 antagonist in the regulation of inflammatory responses.; Isoform 1 may play a role in establishing and maintaining successful pregnancy.

APPLICATION

To ensure optimal assay performance, AREX recommends conducting reagent titration tailored to each testing system for optimal detection results.

WB	1:500 - 1:1000
IF/ICC	1:50 - 1:200

*Results are sample-specific. Please refer to your local assay conditions and test parameters for reference.

PRODUCT OVERVIEW

Description	Rabbit polyclonal antibody to IL-22RA2
Specificity	Recognizes endogenous levels of IL-22RA2 protein.
Antibody Type	Primary antibody
Immunogen	KLH-conjugated synthetic peptide encompassing a sequence within the center region of human IL-22RA2. The exact sequence is proprietary.
Purification	The antibody was purified by immunogen affinity chromatography.
Molecular Weight	Predicted: 30 kD; Observed: 31 kD
Form/Buffer	Liquid in 0.42% Potassium phosphate, 0.87% Sodium chloride, pH 7.3, 30% glycerol, and 0.01% sodium azide.
Alternative Names	Interleukin-22 receptor subunit alpha-2; IL-22 receptor subunit alpha-2; IL-22R-alpha-2; IL-22RA2; Cytokine receptor class-II member 10; Cytokine receptor family 2 member 10; CRF2-10; Cytokine receptor family type 2, soluble 1; CRF2-S1; Interleukin-22-binding protein; IL-22BP; IL22BP; ZcytoR16
Gene Symbol	IL22RA2
Entrez Gene	116379(Human); 237310(Mouse); 444986(Rat)
SwissProt	Q969J5(Human); Q80XF5(Mouse); Q7TNI4(Rat)

*AREX continuously optimizes our products. Webpage content may not reflect the latest updates. For inquiries, please contact info@arexbio.com or your local distributor.

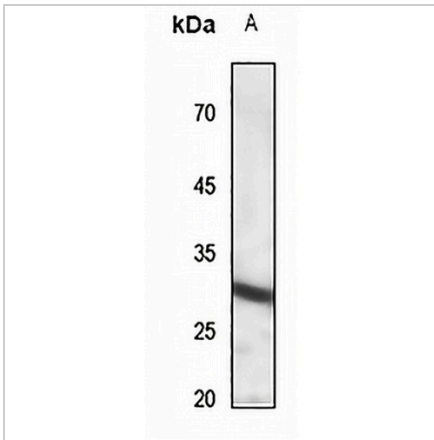
*Clone Number, Reactivity, Source/Host and Clonality can be found in the product name and Key Features section above.

DATASHEET

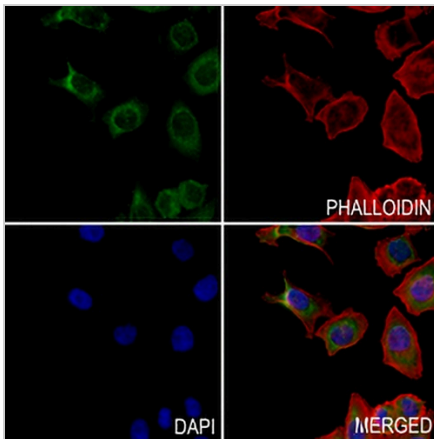
IL-22RA2 Rabbit Polyclonal Antibody

CAT. NO. APA08270

DATA



Western blot analysis of IL-22RA2 expression in HeLa (A) whole cell lysates. (Predicted band size: 30 kD; Observed band size: 31 kD)



Immunofluorescent analysis of IL-22RA2 staining in MCF7 cells. Formalin-fixed cells were permeabilized with 0.1% Triton X-100 in TBS for 5-10 minutes and blocked with 3% BSA-PBS for 30 minutes at room temperature. Cells were probed with the primary antibody in 3% BSA-PBS and incubated overnight at 4 °C in a humidified chamber. Cells were washed with PBST and incubated with a AREX® Fluor 488 -conjugated secondary antibody (green) in PBS at room temperature in the dark. Phalloidin - AREX® Fluor 594 was used to stain Actin filaments (red). DAPI was used to stain the cell nuclei (blue).

STORAGE

Store at 4°C short term. For long term storage, store at -20°C, avoiding freeze/thaw cycles.

NOTE

For Research Use Only. Not for diagnostic, therapeutics, prophylactic or in vivo use.