

DATASHEET

GPR175 Rabbit Polyclonal Antibody

CAT. NO. APA08283

KEY FEATURES

Target	GPR175	Source / Host	Rabbit
Reactivity	Human, Mouse, Rat	Clonality	Polyclonal
Applications	WB, IF/ICC	Conjugation	Unconjugated
Form / Buffer	Liquid in 0.42% Potassium phosphate, 0.87% Sodium chloride, pH 7.3, 30% glycerol, and 0.01% sodium azide.		Storage at-20°C

BACKGROUND

Transmembrane protein adipocyte-associated 1 (TPRA1), also known as Integral membrane protein GPR175, Transmembrane protein 227. Belongs to the UPF0359 family Subcellular location: Membrane Tissue specificity: Ubiquitous, with higher levels in heart, placenta and kidney

APPLICATION

To ensure optimal assay performance, AREX recommends conducting reagent titration tailored to each testing system for optimal detection results.

WB	1:500 - 1:1000
IF/ICC	1:50 - 1:200

*Results are sample-specific. Please refer to your local assay conditions and test parameters for reference.

PRODUCT OVERVIEW

Description	Rabbit polyclonal antibody to GPR175
Specificity	Recognizes endogenous levels of GPR175 protein.
Antibody Type	Primary antibody
Immunogen	KLH-conjugated synthetic peptide encompassing a sequence within the center region of human GPR175. The exact sequence is proprietary.
Purification	The antibody was purified by immunogen affinity chromatography.
Molecular Weight	Predicted: 41 kD; Observed: 41 kD
Form/Buffer	Liquid in 0.42% Potassium phosphate, 0.87% Sodium chloride, pH 7.3, 30% glycerol, and 0.01% sodium azide.
Alternative Names	GPR175; TMEM227; Transmembrane protein adipocyte-associated 1; Integral membrane protein GPR175; Transmembrane protein 227
Gene Symbol	TPRA1
Entrez Gene	131601(Human); 24100(Mouse)
SwissProt	Q86W33(Human); Q99MU1(Mouse); Q791F6(Rat)

*AREX continuously optimizes our products. Webpage content may not reflect the latest updates. For inquiries, please contact info@arexbio.com or your local distributor.

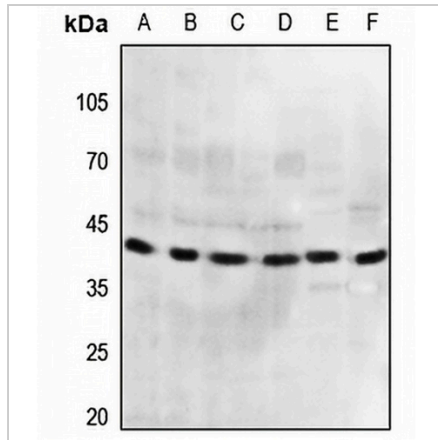
*Clone Number, Reactivity, Source/Host and Clonality can be found in the product name and Key Features section above.

DATASHEET

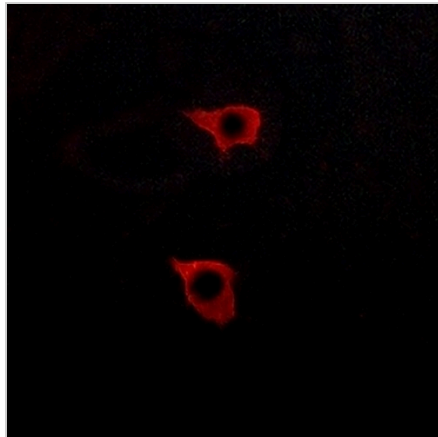
GPR175 Rabbit Polyclonal Antibody

CAT. NO. APA08283

DATA



Western blot analysis of GPR175 expression in HeLa (A), DLD (B), H460 (C), A2780 (D), mouse brain (E), mouse heart (F) whole cell lysates. (Predicted band size: 41 kD; Observed band size: 41 kD)



Immunofluorescent analysis of GPR175 staining in LOVO cells. Formalin-fixed cells were permeabilized with 0.1% Triton X-100 in TBS for 5-10 minutes and blocked with 3% BSA-PBS for 30 minutes at room temperature. Cells were probed with the primary antibody in 3% BSA-PBS and incubated overnight at 4 °C in a humidified chamber. Cells were washed with PBST and incubated with a AREX® Fluor 594-conjugated secondary antibody (red) in PBS at room temperature in the dark.

STORAGE

Store at 4°C short term. For long term storage, store at -20°C, avoiding freeze/thaw cycles.

NOTE

For Research Use Only. Not for diagnostic, therapeutics, prophylactic or in vivo use.