

DATASHEET

IL-31RA Rabbit Polyclonal Antibody

CAT. NO. APA08285

KEY FEATURES

Target	IL-31RA	Source / Host	Rabbit
Reactivity	Human, Mouse, Rat	Clonality	Polyclonal
Applications	WB, IF/ICC	Conjugation	Unconjugated
Form / Buffer	Liquid in 0.42% Potassium phosphate, 0.87% Sodium chloride, pH 7.3, 30% glycerol, and 0.01% sodium azide.		Storage at -20°C

BACKGROUND

Associates with OSMR to form the interleukin-31 receptor which activates STAT3 and to a lower extent STAT1 and STAT5 . May function in skin immunity . Mediates IL31-induced itch, probably in a manner dependent on cation channels TRPA1 and TRPV1 . Positively regulates numbers and cycling status of immature subsets of myeloid progenitor cells in bone marrow in vivo and enhances myeloid progenitor cell survival in vitro .

APPLICATION

To ensure optimal assay performance, AREX recommends conducting reagent titration tailored to each testing system for optimal detection results.

WB	1:500 - 1:1000
IF/ICC	1:50 - 1:200

*Results are sample-specific. Please refer to your local assay conditions and test parameters for reference.

PRODUCT OVERVIEW

Description	Rabbit polyclonal antibody to IL-31RA
Specificity	Recognizes endogenous levels of IL-31RA protein.
Antibody Type	Primary antibody
Immunogen	KLH-conjugated synthetic peptide encompassing a sequence within the center region of human IL-31RA. The exact sequence is proprietary.
Purification	The antibody was purified by immunogen affinity chromatography.
Molecular Weight	Predicted: 82 kD; Observed: 82; 64 kD
Form/Buffer	Liquid in 0.42% Potassium phosphate, 0.87% Sodium chloride, pH 7.3, 30% glycerol, and 0.01% sodium azide.
Alternative Names	CRL3; GPL; Interleukin-31 receptor subunit alpha; IL-31 receptor subunit alpha; IL-31R subunit alpha; IL-31R-alpha; IL-31RA; Cytokine receptor-like 3; GLM-R; hGLM-R; Gp130-like monocyte receptor; Gp130-like receptor; ZcytoR17
Gene Symbol	IL31RA
Entrez Gene	133396(Human); 218624(Mouse)
SwissProt	Q8NI17(Human); Q8K5B1(Mouse)

*AREX continuously optimizes our products. Webpage content may not reflect the latest updates. For inquiries, please contact info@arexbio.com or your local distributor.

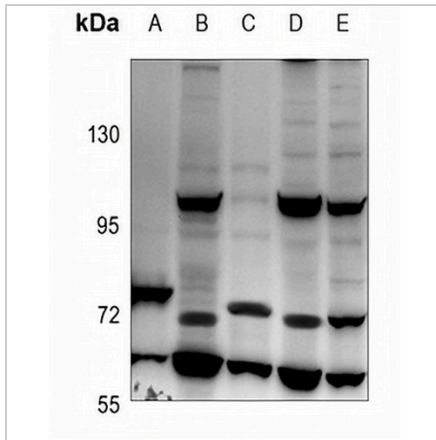
*Clone Number, Reactivity, Source/Host and Clonality can be found in the product name and Key Features section above.

DATASHEET

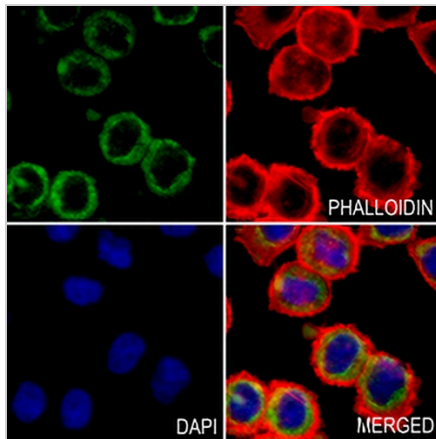
IL-31RA Rabbit Polyclonal Antibody

CAT. NO. APA08285

DATA



Western blot analysis of IL-31RA expression in HuT78 (A), Myla2078 (B), PC3 (C), CT26 (D), C6 (E) whole cell lysates. (Predicted band size: 82 kD; Observed band size: 82; 64 kD)



Immunofluorescent analysis of IL-31RA staining in MCF7 cells. Formalin-fixed cells were permeabilized with 0.1% Triton X-100 in TBS for 5-10 minutes and blocked with 3% BSA-PBS for 30 minutes at room temperature. Cells were probed with the primary antibody in 3% BSA-PBS and incubated overnight at 4 °C in a humidified chamber. Cells were washed with PBST and incubated with a AREX® Fluor 488 -conjugated secondary antibody (green) in PBS at room temperature in the dark. Phalloidin - AREX® Fluor 594 was used to stain Actin filaments (red). DAPI was used to stain the cell nuclei (blue).

STORAGE

Store at 4°C short term. For long term storage, store at -20°C, avoiding freeze/thaw cycles.

NOTE

For Research Use Only. Not for diagnostic, therapeutics, prophylactic or in vivo use.