

DATASHEET

DOCK11 Rabbit Polyclonal Antibody

CAT. NO. APA08287

KEY FEATURES

Target	DOCK11	Source / Host	Rabbit
Reactivity	Human, Mouse, Rat, Pig	Clonality	Polyclonal
Applications	WB	Conjugation	Unconjugated
Form / Buffer	Liquid in 0.42% Potassium phosphate, 0.87% Sodium chloride, pH 7.3, 30% glycerol, and 0.01% sodium azide.		Storage at-20°C

BACKGROUND

Guanine nucleotide-exchange factor (GEF) that activates CDC42 by exchanging bound GDP for free GTP that activates CDC42 by exchanging bound GDP for free GTP . Required for marginal zone (MZ) B-cell development, is associated with early bone marrow B-cell development, MZ B-cell formation, MZ B-cell number and marginal metallophilic macrophages morphology . Facilitates filopodia formation through the activation of CDC42 .

APPLICATION

To ensure optimal assay performance, AREX recommends conducting reagent titration tailored to each testing system for optimal detection results.

WB	1:500 - 1:1000
----	----------------

*Results are sample-specific. Please refer to your local assay conditions and test parameters for reference.

PRODUCT OVERVIEW

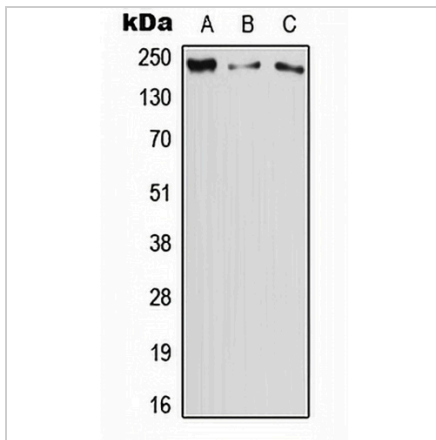
Description	Rabbit polyclonal antibody to DOCK11
Specificity	Recognizes endogenous levels of DOCK11 protein.
Antibody Type	Primary antibody
Immunogen	KLH-conjugated synthetic peptide encompassing a sequence within the center region of human DOCK11. The exact sequence is proprietary.
Purification	The antibody was purified by immunogen affinity chromatography.
Molecular Weight	Predicted: 237 kD; Observed: 240 kD
Form/Buffer	Liquid in 0.42% Potassium phosphate, 0.87% Sodium chloride, pH 7.3, 30% glycerol, and 0.01% sodium azide.
Alternative Names	ZIZ2; Dedicator of cytokinesis protein 11; Activated Cdc42-associated guanine nucleotide exchange factor; ACG; Zizimin-2
Gene Symbol	DOCK11
Entrez Gene	139818(Human); 75974(Mouse)
SwissProt	Q5JSL3(Human); A2AF47(Mouse)

*AREX continuously optimizes our products. Webpage content may not reflect the latest updates. For inquiries, please contact info@arexbio.com or your local distributor.

*Clone Number, Reactivity, Source/Host and Clonality can be found in the product name and Key Features section above.

DATASHEET**DOCK11 Rabbit Polyclonal Antibody**

CAT. NO. APA08287

DATA

Western blot analysis of DOCK11 expression in HeLa (A), Raw264.7 (B), PC12 (C) whole cell lysates. (Predicted band size: 237 kD; Observed band size: 240 kD)

STORAGE

Store at 4°C short term. For long term storage, store at -20°C, avoiding freeze/thaw cycles.

NOTE

For Research Use Only. Not for diagnostic, therapeutics, prophylactic or in vivo use.