

DATASHEET

CT47 Rabbit Polyclonal Antibody

CAT. NO. APA08318

KEY FEATURES

Target	CT47	Source / Host	Rabbit
Reactivity	Human, Mouse, Rat, Monkey	Clonality	Polyclonal
Applications	WB	Conjugation	Unconjugated
Form / Buffer	Liquid in 0.42% Potassium phosphate, 0.87% Sodium chloride, pH 7.3, 30% glycerol, and 0.01% sodium azide.		Storage at -20°C

BACKGROUND

This locus represents a member of the cancer/testis gene family 47. This family, also known as CT47, is comprised of 13 nearly identical loci clustered at Xq24. This locus is the most telomeric of the cluster.

APPLICATION

To ensure optimal assay performance, AREX recommends conducting reagent titration tailored to each testing system for optimal detection results.

WB	1:500 - 1:1000
----	----------------

*Results are sample-specific. Please refer to your local assay conditions and test parameters for reference.

PRODUCT OVERVIEW

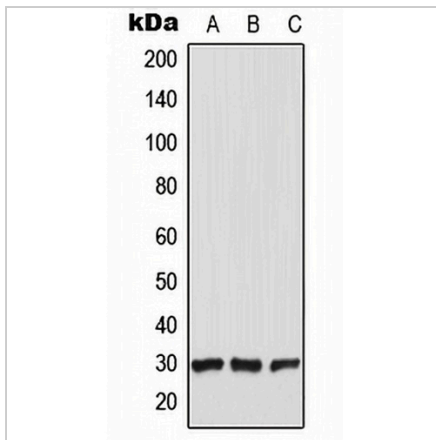
Description	Rabbit polyclonal antibody to CT47
Specificity	Recognizes endogenous levels of CT47 protein.
Antibody Type	Primary antibody
Immunogen	KLH-conjugated synthetic peptide encompassing a sequence within the C-term region of human CT47. The exact sequence is proprietary.
Purification	The antibody was purified by immunogen affinity chromatography.
Molecular Weight	Predicted: 30 kD; Observed: 30 kD
Form/Buffer	Liquid in 0.42% Potassium phosphate, 0.87% Sodium chloride, pH 7.3, 30% glycerol, and 0.01% sodium azide.
Alternative Names	CT47.1; CT47.2; CT47.3; CT47.4; CT47.5; CT47.6; CT47.7; CT47.8; CT47.9; CT47.10; CT47.11; CT47.12; Cancer/testis antigen 47A; Cancer/testis antigen 47; CT47
Gene Symbol	CT47A1; CT47A2; CT47A3; CT47A4; CT47A5; CT47A6; CT47A7; CT47A8; CT47A9; CT47A10; CT47A11; CT47A12
Entrez Gene	100507170; 255313; 653282; 728036; 728042; 728049; 728062; 728072; 728075; 728082; 728090; 728096(Human)
SwissProt	Q5JQC4(Human)

*AREX continuously optimizes our products. Webpage content may not reflect the latest updates. For inquiries, please contact info@arexbio.com or your local distributor.

*Clone Number, Reactivity, Source/Host and Clonality can be found in the product name and Key Features section above.

DATASHEET**CT47 Rabbit Polyclonal Antibody**

CAT. NO. APA08318

DATA

Western blot analysis of CT47 expression in HEK293T (A), Raw264.7 (B), PC12 (C) whole cell lysates. (Predicted band size: 30 kD; Observed band size: 30 kD)

STORAGE

Store at 4°C short term. For long term storage, store at -20°C, avoiding freeze/thaw cycles.

NOTE

For Research Use Only. Not for diagnostic, therapeutics, prophylactic or in vivo use.