

DATASHEET

GPR110 Rabbit Polyclonal Antibody

CAT. NO. APA08321

KEY FEATURES

Target	GPR110	Source / Host	Rabbit
Reactivity	Human, Mouse, Rat	Clonality	Polyclonal
Applications	WB, IF/ICC	Conjugation	Unconjugated
Form / Buffer	Liquid in 0.42% Potassium phosphate, 0.87% Sodium chloride, pH 7.3, 30% glycerol, and 0.01% sodium azide.		Storage at -20°C

BACKGROUND

Adhesion G-protein coupled receptor (aGPCR) for N-docosahexaenylethanolamine (synaptamide), an omega-3 fatty acid lipid highly enriched in the brain for N-docosahexaenylethanolamine (synaptamide), an omega-3 fatty acid lipid highly enriched in the brain . Ligand binding causes a conformation change that triggers signaling via guanine nucleotide-binding proteins (G proteins) and modulates the activity of downstream effectors, such as adenylate cyclase . ADGRF1 is coupled to G(s) G proteins and mediates activation of adenylate cyclase activity . Also able to couple to G(q), G(i) and G(12)/G(13) G proteins; additional evidence is however required to confirm this result in vivo . Involved in the development of neurons and cognitive function . In liver, involved in fat accumulation .

APPLICATION

To ensure optimal assay performance, AREX recommends conducting reagent titration tailored to each testing system for optimal detection results.

WB	1:500 - 1:1000
IF/ICC	1:50 - 1:200

*Results are sample-specific. Please refer to your local assay conditions and test parameters for reference.

PRODUCT OVERVIEW

Description	Rabbit polyclonal antibody to GPR110
Specificity	Recognizes endogenous levels of GPR110 protein.
Antibody Type	Primary antibody
Immunogen	KLH-conjugated synthetic peptide encompassing a sequence within the C-term region of human GPR110. The exact sequence is proprietary.
Purification	The antibody was purified by immunogen affinity chromatography.
Molecular Weight	Predicted: 101 kD; Observed: 101 kD
Form/Buffer	Liquid in 0.42% Potassium phosphate, 0.87% Sodium chloride, pH 7.3, 30% glycerol, and 0.01% sodium azide.
Alternative Names	PGR19; Probable G-protein coupled receptor 110; G-protein coupled receptor KPG_012; G-protein coupled receptor PGR19
Gene Symbol	GPR110
Entrez Gene	266977(Human); 77596(Mouse)
SwissProt	Q5T601(Human); Q8VEC3(Mouse)

*AREX continuously optimizes our products. Webpage content may not reflect the latest updates. For inquiries, please contact info@arexbio.com or your local distributor.

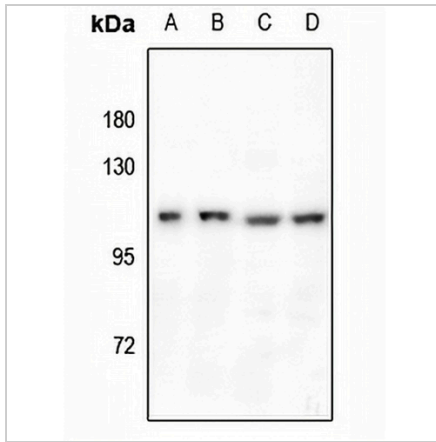
*Clone Number, Reactivity, Source/Host and Clonality can be found in the product name and Key Features section above.

DATASHEET

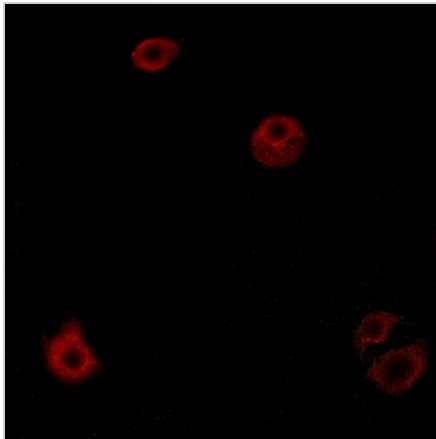
GPR110 Rabbit Polyclonal Antibody

CAT. NO. APA08321

DATA



Western blot analysis of GPR110 expression in HEK293T (A), PC12 (B), CT26 (C), HeLa (D) whole cell lysates. (Predicted band size: 101 kD; Observed band size: 101 kD)



Immunofluorescent analysis of GPR110 staining in A549 cells. Formalin-fixed cells were permeabilized with 0.1% Triton X-100 in TBS for 5-10 minutes and blocked with 3% BSA-PBS for 30 minutes at room temperature. Cells were probed with the primary antibody in 3% BSA-PBS and incubated overnight at 4 °C in a humidified chamber. Cells were washed with PBST and incubated with a AREX® Fluor 594-conjugated secondary antibody (red) in PBS at room temperature in the dark.

STORAGE

Store at 4°C short term. For long term storage, store at -20°C, avoiding freeze/thaw cycles.

NOTE

For Research Use Only. Not for diagnostic, therapeutics, prophylactic or in vivo use.