

DATASHEET

PIGW Rabbit Polyclonal Antibody

CAT. NO. APA08324

KEY FEATURES

Target	PIGW	Source / Host	Rabbit
Reactivity	Human, Mouse, Rat	Clonality	Polyclonal
Applications	WB	Conjugation	Unconjugated
Form / Buffer	Liquid in 0.42% Potassium phosphate, 0.87% Sodium chloride, pH 7.3, 30% glycerol, and 0.01% sodium azide.		Storage at -20°C

BACKGROUND

Acyltransferase that catalyzes the acyl transfer from an acyl-CoA at the 2-OH position of the inositol ring of a 6-(alpha-D-glucosaminy)-1-(1,2-diacyl-sn-glycero-3-phospho)-1D-myo-inositol (glucosaminy phosphatidylinositol, GlcN-PI) to generate a 2-acyl-6-alpha-D-glucosaminy-1-(1,2-diacyl-sn-glycero-3-phospho)-1D-myo-inositol (glucosaminy acyl phosphatidylinositol, GlcN-(acyl)PI) and participates in the fourth step of GPI-anchor biosynthesis .

APPLICATION

To ensure optimal assay performance, AREX recommends conducting reagent titration tailored to each testing system for optimal detection results.

WB	1:500 - 1:1000
----	----------------

*Results are sample-specific. Please refer to your local assay conditions and test parameters for reference.

PRODUCT OVERVIEW

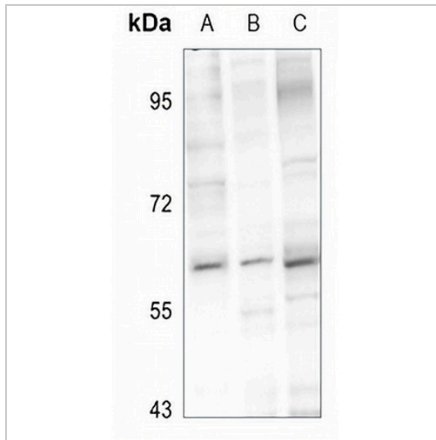
Description	Rabbit polyclonal antibody to PIGW
Specificity	Recognizes endogenous levels of PIGW protein.
Antibody Type	Primary antibody
Immunogen	KLH-conjugated synthetic peptide encompassing a sequence within the C-term region of human PIGW. The exact sequence is proprietary.
Purification	The antibody was purified by immunogen affinity chromatography.
Molecular Weight	Predicted: 56 kD; Observed: 65 kD
Form/Buffer	Liquid in 0.42% Potassium phosphate, 0.87% Sodium chloride, pH 7.3, 30% glycerol, and 0.01% sodium azide.
Alternative Names	Phosphatidylinositol-glycan biosynthesis class W protein; PIG-W
Gene Symbol	PIGW
Entrez Gene	284098(Human); 70325(Mouse); 378774(Rat)
SwissProt	Q7Z7B1(Human); Q8C398(Mouse); Q7TSN4(Rat)

*AREX continuously optimizes our products. Webpage content may not reflect the latest updates. For inquiries, please contact info@arexbio.com or your local distributor.

*Clone Number, Reactivity, Source/Host and Clonality can be found in the product name and Key Features section above.

DATASHEET**PIGW Rabbit Polyclonal Antibody**

CAT. NO. APA08324

DATA

Western blot analysis of PIGW expression in U87MG (A), AML12 (B), PC12 (C) whole cell lysates. (Predicted band size: 56 kD; Observed band size: 65 kD)

STORAGE

Store at 4°C short term. For long term storage, store at -20°C, avoiding freeze/thaw cycles.

NOTE

For Research Use Only. Not for diagnostic, therapeutics, prophylactic or in vivo use.