

DATASHEET

NHE9 Rabbit Polyclonal Antibody

CAT. NO. APA08328

KEY FEATURES

Target	NHE9	Source / Host	Rabbit
Reactivity	Human, Mouse, Rat, Dog, Monkey	Clonality	Polyclonal
Applications	WB	Conjugation	Unconjugated
Form / Buffer	Liquid in 0.42% Potassium phosphate, 0.87% Sodium chloride, pH 7.3, 30% glycerol, and 0.01% sodium azide.		Storage at -20°C

BACKGROUND

Endosomal Na(+), K(+)/H(+) antiporter. Mediates the electroneutral exchange of endosomal luminal H(+) for a cytosolic Na(+) or K(+) (Probable). By facilitating proton efflux, SLC9A9 counteracts the acidity generated by vacuolar (V)-ATPase, thereby limiting luminal acidification. Regulates organellar pH and consequently, e.g., endosome maturation and endocytic trafficking of plasma membrane receptors and neurotransmitters, K(+)/H(+) antiporter. Mediates the electroneutral exchange of endosomal luminal H(+) for a cytosolic Na(+) or K(+) (Probable). By facilitating proton efflux, SLC9A9 counteracts the acidity generated by vacuolar (V)-ATPase, thereby limiting luminal acidification.

APPLICATION

To ensure optimal assay performance, AREX recommends conducting reagent titration tailored to each testing system for optimal detection results.

WB	1:500 - 1:1000
----	----------------

*Results are sample-specific. Please refer to your local assay conditions and test parameters for reference.

PRODUCT OVERVIEW

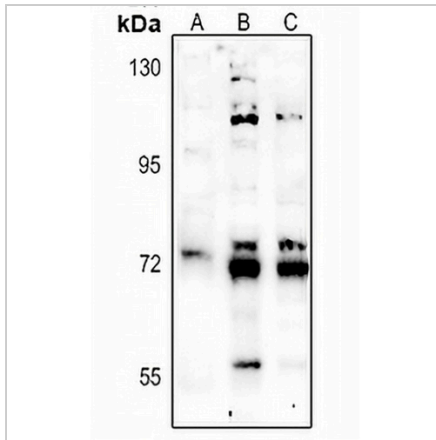
Description	Rabbit polyclonal antibody to NHE9
Specificity	Recognizes endogenous levels of NHE9 protein.
Antibody Type	Primary antibody
Immunogen	KLH-conjugated synthetic peptide encompassing a sequence within the center region of human NHE9. The exact sequence is proprietary.
Purification	The antibody was purified by immunogen affinity chromatography.
Molecular Weight	Predicted: 72 kD; Observed: 73 kD
Form/Buffer	Liquid in 0.42% Potassium phosphate, 0.87% Sodium chloride, pH 7.3, 30% glycerol, and 0.01% sodium azide.
Alternative Names	NHE9; Sodium/hydrogen exchanger 9; Na(+)/H(+) exchanger 9; NHE-9; Solute carrier family 9 member 9
Gene Symbol	SLC9A9
Entrez Gene	285195(Human); 331004(Mouse)
SwissProt	Q8IVB4(Human); Q8BZ00(Mouse)

*AREX continuously optimizes our products. Webpage content may not reflect the latest updates. For inquiries, please contact info@arexbio.com or your local distributor.

*Clone Number, Reactivity, Source/Host and Clonality can be found in the product name and Key Features section above.

DATASHEET**NHE9 Rabbit Polyclonal Antibody**

CAT. NO. APA08328

DATA

Western blot analysis of NHE9 expression in rat heart (A), A549 (B), HepG2 (C) whole cell lysates. (Predicted band size: 72 kD; Observed band size: 73 kD)

STORAGE

Store at 4°C short term. For long term storage, store at -20°C, avoiding freeze/thaw cycles.

NOTE

For Research Use Only. Not for diagnostic, therapeutics, prophylactic or in vivo use.