

**DATASHEET**

**SERINC2 Rabbit Polyclonal Antibody**

CAT. NO. APA08333

**KEY FEATURES**

|               |   |               |                    |
|---------------|---|---------------|--------------------|
| Target        | SERINC2   | Source / Host | Rabbit             |
| Reactivity    | Human   | Clonality     | Polyclonal         |
| Applications  | WB, IHC, IF/ICC   | Conjugation   | Unconjugated       |
| Form / Buffer | Liquid in 0.42% Potassium phosphate, 0.87% Sodium chloride, pH 7.3, 30% glycerol, and 0.01% sodium azide. |               | Storage<br>at-20°C |

**BACKGROUND**

Non-ATP-dependent, non-specific lipid transporter for phosphatidylserine, phosphatidylcholine, and phosphatidylethanolamine. Functions as a scramblase that flips lipids in both directions across the membrane. In contrast to SERINC3 and SERINC5, has no effect on HIV-1 particles infectivity.

**APPLICATION**

To ensure optimal assay performance, AREX recommends conducting reagent titration tailored to each testing system for optimal detection results.

|        |                |
|--------|----------------|
| WB     | 1:500 - 1:1000 |
| IHC    | 1:50 - 1:100   |
| IF/ICC | 1:50 - 1:200   |

\*Results are sample-specific. Please refer to your local assay conditions and test parameters for reference.

**PRODUCT OVERVIEW**

|                   |  |
|-------------------|--|
| Description       | Rabbit polyclonal antibody to SERINC2  |
| Specificity       | Recognizes endogenous levels of SERINC2 protein.   |
| Antibody Type     | Primary antibody   |
| Immunogen         | KLH-conjugated synthetic peptide encompassing a sequence within the C-term region of human SERINC2. The exact sequence is proprietary. |
| Purification      | The antibody was purified by immunogen affinity chromatography.  |
| Molecular Weight  | Predicted: 50 kD; Observed: 50 kD  |
| Form/Buffer       | Liquid in 0.42% Potassium phosphate, 0.87% Sodium chloride, pH 7.3, 30% glycerol, and 0.01% sodium azide.                              |
| Alternative Names | TDE2L; Serine incorporator 2; Tumor differentially expressed protein 2-like  |
| Gene Symbol       | SERINC2  |
| Entrez Gene       | 347735(Human)  |
| SwissProt         | Q96SA4(Human)  |

\*AREX continuously optimizes our products. Webpage content may not reflect the latest updates. For inquiries, please contact [info@arexbio.com](mailto:info@arexbio.com) or your local distributor.

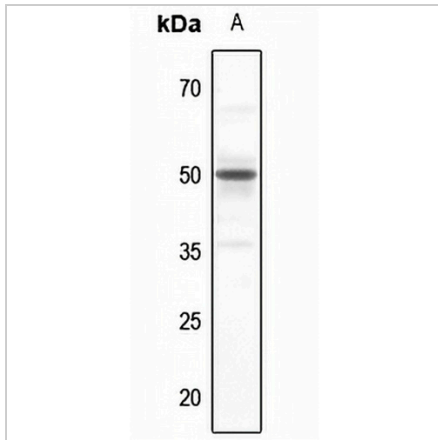
\*Clone Number, Reactivity, Source/Host and Clonality can be found in the product name and Key Features section above.

**DATASHEET**

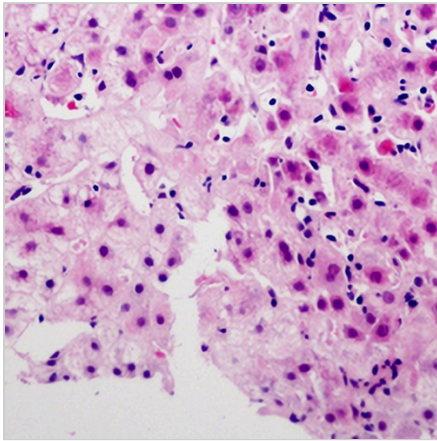
**SERINC2 Rabbit Polyclonal Antibody**

CAT. NO. APA08333

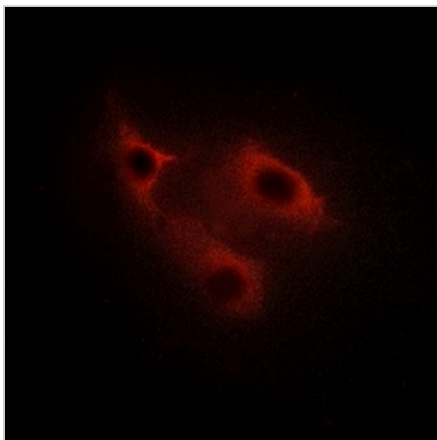
**DATA**



Western blot analysis of SERINC2 expression in HEK293T (A) whole cell lysates. (Predicted band size: 50 kD; Observed band size: 50 kD)



Immunohistochemical analysis of SERINC2 staining in human liver cancer formalin fixed paraffin embedded tissue section. The section was pre-treated using heat mediated antigen retrieval with sodium citrate buffer (pH 6.0). The section was then incubated with the antibody at room temperature and detected using an HRP conjugated compact polymer system. AEC was used as the chromogen. The section was then counterstained with haematoxylin and mounted with DPX.



Immunofluorescent analysis of SERINC2 staining in NIH-3T3 cells. Formalin-fixed cells were permeabilized with 0.1% Triton X-100 in TBS for 5-10 minutes and blocked with 3% BSA-PBS for 30 minutes at room temperature. Cells were probed with the primary antibody in 3% BSA-PBS and incubated overnight at 4 °C in a humidified chamber. Cells were washed with PBST and incubated with a AREX® Fluor 594-conjugated secondary antibody (red) in PBS at room temperature in the dark.

**STORAGE**

Store at 4°C short term. For long term storage, store at -20°C, avoiding freeze/thaw cycles.

**NOTE**

For Research Use Only. Not for diagnostic, therapeutics, prophylactic or in vivo use.