

DATASHEET

SFT2D2 Rabbit Polyclonal Antibody

CAT. NO. APA08335

KEY FEATURES

Target	SFT2D2	Source / Host	Rabbit
Reactivity	Human, Mouse, Rat, Zebrafish	Clonality	Polyclonal
Applications	WB	Conjugation	Unconjugated
Form / Buffer	Liquid in 0.42% Potassium phosphate, 0.87% Sodium chloride, pH 7.3, 30% glycerol, and 0.01% sodium azide.		Storage at -20°C

BACKGROUND

May be involved in fusion of retrograde transport vesicles derived from an endocytic compartment with the Golgi complex.

APPLICATION

To ensure optimal assay performance, AREX recommends conducting reagent titration tailored to each testing system for optimal detection results.

WB	1:500 - 1:1000
----	----------------

*Results are sample-specific. Please refer to your local assay conditions and test parameters for reference.

PRODUCT OVERVIEW

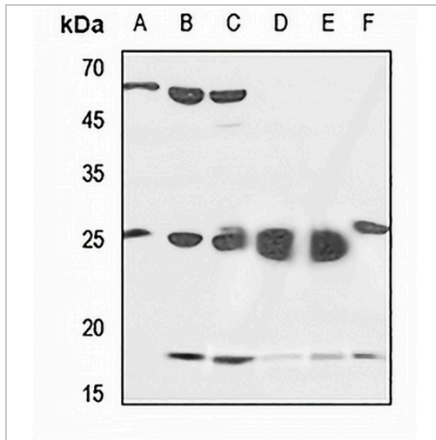
Description	Rabbit polyclonal antibody to SFT2D2
Specificity	Recognizes endogenous levels of SFT2D2 protein.
Antibody Type	Primary antibody
Immunogen	KLH-conjugated synthetic peptide encompassing a sequence within the center region of human SFT2D2. The exact sequence is proprietary.
Purification	The antibody was purified by immunogen affinity chromatography.
Molecular Weight	Predicted: 17 kD; Observed: 25; 18 kD
Form/Buffer	Liquid in 0.42% Potassium phosphate, 0.87% Sodium chloride, pH 7.3, 30% glycerol, and 0.01% sodium azide.
Alternative Names	Vesicle transport protein SFT2B; SFT2 domain-containing protein 2
Gene Symbol	SFT2D2
Entrez Gene	375035(Human); 108735(Mouse); 360868(Rat)
SwissProt	O95562(Human); Q8VD57(Mouse); Q4FZV2(Rat)

*AREX continuously optimizes our products. Webpage content may not reflect the latest updates. For inquiries, please contact info@arexbio.com or your local distributor.

*Clone Number, Reactivity, Source/Host and Clonality can be found in the product name and Key Features section above.

DATASHEET**SFT2D2 Rabbit Polyclonal Antibody**

CAT. NO. APA08335

DATA

Western blot analysis of SFT2D2 expression in HEK293T (A), HeLa (B), HGC27 (C), mouse lung (D), mouse kidney (E), rat lung (F) whole cell lysates. (Predicted band size: 17 kD; Observed band size: 25; 18 kD)

STORAGE

Store at 4°C short term. For long term storage, store at -20°C, avoiding freeze/thaw cycles.

NOTE

For Research Use Only. Not for diagnostic, therapeutics, prophylactic or in vivo use.