

DATASHEET

GPR179 Rabbit Polyclonal Antibody

CAT. NO. APA08342

KEY FEATURES

Target	GPR179	Source / Host	Rabbit
Reactivity	Human, Mouse	Clonality	Polyclonal
Applications	WB	Conjugation	Unconjugated
Form / Buffer	Liquid in 0.42% Potassium phosphate, 0.87% Sodium chloride, pH 7.3, 30% glycerol, and 0.01% sodium azide.		Storage at -20°C

BACKGROUND

Orphan receptor involved in vision . Required for signal transduction through retinal depolarizing bipolar cells . Acts as an atypical G-protein coupled receptor that recruits and regulates the R7 group RGS-GNB5 complexes instead of activating G proteins: promotes the GTPase activator activity of R7 RGS proteins, increasing the GTPase activity of G protein alpha subunits, thereby driving them into their inactive GDP-bound form . Associates with components of metabotropic signaling cascade in retina ON-bipolar neurons, such as TRPM1 and GRM6: may control the ability of the GRM6 cascade to gate TRPM1 .

APPLICATION

To ensure optimal assay performance, AREX recommends conducting reagent titration tailored to each testing system for optimal detection results.

WB	1:500 - 1:1000
----	----------------

*Results are sample-specific. Please refer to your local assay conditions and test parameters for reference.

PRODUCT OVERVIEW

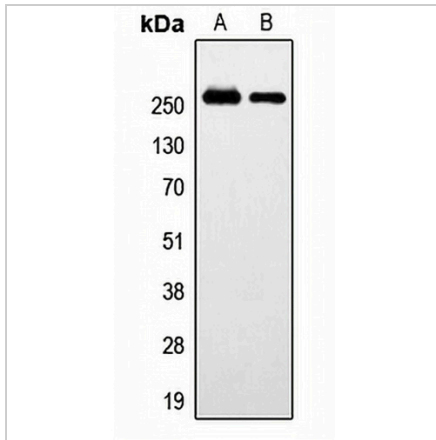
Description	Rabbit polyclonal antibody to GPR179
Specificity	Recognizes endogenous levels of GPR179 protein.
Antibody Type	Primary antibody
Immunogen	KLH-conjugated synthetic peptide encompassing a sequence within the center region of human GPR179. The exact sequence is proprietary.
Purification	The antibody was purified by immunogen affinity chromatography.
Molecular Weight	Predicted: 257 kD; Observed: 257 kD
Form/Buffer	Liquid in 0.42% Potassium phosphate, 0.87% Sodium chloride, pH 7.3, 30% glycerol, and 0.01% sodium azide.
Alternative Names	GPR158L; GPR158L1; Probable G-protein coupled receptor 179; Probable G-protein coupled receptor 158-like 1; GPR158-like
Gene Symbol	GPR179
Entrez Gene	440435(Human)
SwissProt	Q6PRD1(Human)

*AREX continuously optimizes our products. Webpage content may not reflect the latest updates. For inquiries, please contact info@arexbio.com or your local distributor.

*Clone Number, Reactivity, Source/Host and Clonality can be found in the product name and Key Features section above.

DATASHEET**GPR179 Rabbit Polyclonal Antibody**

CAT. NO. APA08342

DATA

Western blot analysis of GPR179 expression in HeLa (A), SP2/O (B) whole cell lysates. (Predicted band size: 257 kD; Observed band size: 257 kD)

STORAGE

Store at 4°C short term. For long term storage, store at -20°C, avoiding freeze/thaw cycles.

NOTE

For Research Use Only. Not for diagnostic, therapeutics, prophylactic or in vivo use.