

**DATASHEET**

**Angiotensin-2 Rabbit Polyclonal Antibody**

CAT. NO. APA08350

**KEY FEATURES**

Target	Angiotensin-2	Source / Host	Rabbit
Reactivity	Human, Mouse, Rat, Dog, Monkey, Pig	Clonality	Polyclonal
Applications	WB, IHC	Conjugation	Unconjugated
Form / Buffer	Liquid in 0.42% Potassium phosphate, 0.87% Sodium chloride, pH 7.3, 30% glycerol, and 0.01% sodium azide.		Storage at -20°C

**BACKGROUND**

Binds to TEK/TIE2, competing for the ANGPT1 binding site, and modulating ANGPT1 signaling . Can induce tyrosine phosphorylation of TEK/TIE2 in the absence of ANGPT1 . In the absence of angiogenic inducers, such as VEGF, ANGPT2-mediated loosening of cell-matrix contacts may induce endothelial cell apoptosis with consequent vascular regression. In concert with VEGF, it may facilitate endothelial cell migration and proliferation, thus serving as a permissive angiogenic signal . Involved in the regulation of lymphangiogenesis .

**APPLICATION**

To ensure optimal assay performance, AREX recommends conducting reagent titration tailored to each testing system for optimal detection results.

WB	1:500 - 1:1000
IHC	1:50 - 1:100

\*Results are sample-specific. Please refer to your local assay conditions and test parameters for reference.

**PRODUCT OVERVIEW**

Description	Rabbit polyclonal antibody to Angiotensin-2
Specificity	Recognizes endogenous levels of Angiotensin-2 protein.
Antibody Type	Primary antibody
Immunogen	KLH-conjugated synthetic peptide encompassing a sequence within the center region of human Angiotensin-2. The exact sequence is proprietary.
Purification	The antibody was purified by immunogen affinity chromatography.
Molecular Weight	Predicted: 50; Observed: 75 kD
Form/Buffer	Liquid in 0.42% Potassium phosphate, 0.87% Sodium chloride, pH 7.3, 30% glycerol, and 0.01% sodium azide.
Alternative Names	Angiotensin-2; ANG-2
Gene Symbol	ANGPT2
Entrez Gene	285(Human); 11601(Mouse); 89805(Rat)
SwissProt	O15123(Human); O35608(Mouse); O35462(Rat)

\*AREX continuously optimizes our products. Webpage content may not reflect the latest updates. For inquiries, please contact [info@arexbio.com](mailto:info@arexbio.com) or your local distributor.

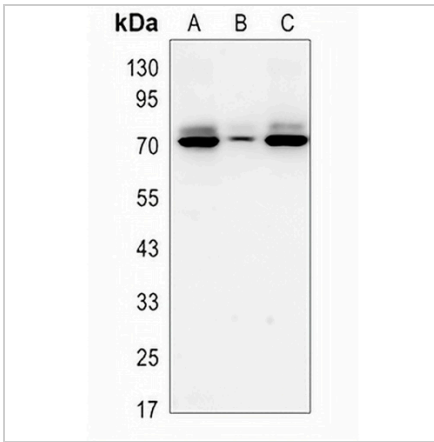
\*Clone Number, Reactivity, Source/Host and Clonality can be found in the product name and Key Features section above.

**DATASHEET**

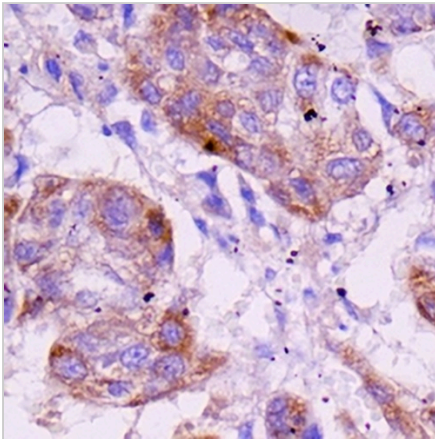
**Angiotensin-2 Rabbit Polyclonal Antibody**

CAT. NO. APA08350

**DATA**



Western blot analysis of Angiotensin-2 expression in HepG2 (A), mouse brain (B), rat kidney (C) whole cell lysates. (Predicted band size: 50; 56 kD; Observed band size: 75 kD)



Immunohistochemical analysis of Angiotensin-2 staining in human kidney formalin fixed paraffin embedded tissue section. The section was pre-treated using heat mediated antigen retrieval with sodium citrate buffer (pH 6.0). The section was then incubated with the antibody at room temperature and detected using an HRP conjugated compact polymer system. DAB was used as the chromogen. The section was then counterstained with haematoxylin and mounted with DPX.

**STORAGE**

Store at 4°C short term. For long term storage, store at -20°C, avoiding freeze/thaw cycles.

**NOTE**

For Research Use Only. Not for diagnostic, therapeutics, prophylactic or in vivo use.