

DATASHEET

FXYD2 Rabbit Polyclonal Antibody

CAT. NO. APA08354

KEY FEATURES

| | | | |
|---------------|---|---------------|---------------------|
| Target | FXYD2 | Source / Host | Rabbit |
| Reactivity | Human, Mouse, Rat | Clonality | Polyclonal |
| Applications | WB | Conjugation | Unconjugated |
| Form / Buffer | Liquid in 0.42% Potassium phosphate, 0.87% Sodium chloride, pH 7.3, 30% glycerol, and 0.01% sodium azide. | | Storage at -20°C |

BACKGROUND

May be involved in forming the receptor site for cardiac glycoside binding or may modulate the transport function of the sodium ATPase.

APPLICATION

To ensure optimal assay performance, AREX recommends conducting reagent titration tailored to each testing system for optimal detection results.

| | |
|----|----------------|
| WB | 1:500 - 1:1000 |
|----|----------------|

*Results are sample-specific. Please refer to your local assay conditions and test parameters for reference.

PRODUCT OVERVIEW

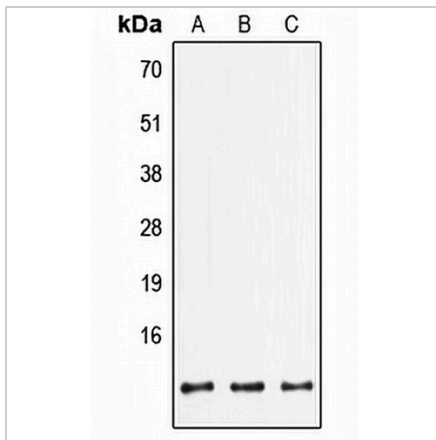
| | |
|-------------------|---|
| Description | Rabbit polyclonal antibody to FXYD2 |
| Specificity | Recognizes endogenous levels of FXYD2 protein. |
| Antibody Type | Primary antibody |
| Immunogen | KLH-conjugated synthetic peptide encompassing a sequence within the C-term region of human FXYD2. The exact sequence is proprietary. |
| Purification | The antibody was purified by immunogen affinity chromatography. |
| Molecular Weight | Predicted: 7 kD; Observed: 7 kD |
| Form/Buffer | Liquid in 0.42% Potassium phosphate, 0.87% Sodium chloride, pH 7.3, 30% glycerol, and 0.01% sodium azide. |
| Alternative Names | ATP1C; ATP1G1; Sodium/potassium-transporting ATPase subunit gamma; Na(+)/K(+) ATPase subunit gamma; FXYD domain-containing ion transport regulator 2; Sodium pump gamma chain |
| Gene Symbol | FXYD2 |
| Entrez Gene | 486(Human); 11936(Mouse); 29639(Rat) |
| SwissProt | P54710(Human); Q04646(Mouse); Q04679(Rat) |

*AREX continuously optimizes our products. Webpage content may not reflect the latest updates. For inquiries, please contact info@arexbio.com or your local distributor.

*Clone Number, Reactivity, Source/Host and Clonality can be found in the product name and Key Features section above.

DATASHEET**FXYD2 Rabbit Polyclonal Antibody**

CAT. NO. APA08354

DATA

Western blot analysis of FXYD2 expression in HepG2 (A), mouse lung (B), rat brain (C) whole cell lysates. (Predicted band size: 7 kD; Observed band size: 7 kD)

STORAGE

Store at 4°C short term. For long term storage, store at -20°C, avoiding freeze/thaw cycles.

NOTE

For Research Use Only. Not for diagnostic, therapeutics, prophylactic or in vivo use.