

DATASHEET

CLCN1 Rabbit Polyclonal Antibody

CAT. NO. APA08369

KEY FEATURES

Target	CLCN1	Source / Host	Rabbit
Reactivity	Human, Mouse, Rat	Clonality	Polyclonal
Applications	WB, IHC	Conjugation	Unconjugated
Form / Buffer	Liquid in 0.42% Potassium phosphate, 0.87% Sodium chloride, pH 7.3, 30% glycerol, and 0.01% sodium azide.		Storage at -20°C

BACKGROUND

Voltage-gated chloride channel involved in skeletal muscle excitability. Generates most of the plasma membrane chloride conductance in skeletal muscle fibers, stabilizes the resting membrane potential and contributes to the repolarization phase during action potential firing. Forms a homodimeric channel where each subunit has its own ion conduction pathway. Conducts double-barreled currents controlled by two types of gates, two fast glutamate gates that control each subunit independently and a slow common gate that opens and shuts off both subunits simultaneously. Has a significant open probability at muscle resting potential and is further activated upon membrane depolarization.

APPLICATION

To ensure optimal assay performance, AREX recommends conducting reagent titration tailored to each testing system for optimal detection results.

WB	1:500 - 1:1000
IHC	1:50 - 1:100

*Results are sample-specific. Please refer to your local assay conditions and test parameters for reference.

PRODUCT OVERVIEW

Description	Rabbit polyclonal antibody to CLCN1
Specificity	Recognizes endogenous levels of CLCN1 protein.
Antibody Type	Primary antibody
Immunogen	KLH-conjugated synthetic peptide encompassing a sequence within the N-term region of human CLCN1. The exact sequence is proprietary.
Purification	The antibody was purified by immunogen affinity chromatography.
Molecular Weight	Predicted: 108 kD; Observed: 108 kD
Form/Buffer	Liquid in 0.42% Potassium phosphate, 0.87% Sodium chloride, pH 7.3, 30% glycerol, and 0.01% sodium azide.
Alternative Names	CLC1; Chloride channel protein 1; CIC-1; Chloride channel protein, skeletal muscle
Gene Symbol	CLCN1
Entrez Gene	1180(Human); 12723(Mouse); 25688(Rat)
SwissProt	P35523(Human); Q64347(Mouse); P35524(Rat)

*AREX continuously optimizes our products. Webpage content may not reflect the latest updates. For inquiries, please contact info@arexbio.com or your local distributor.

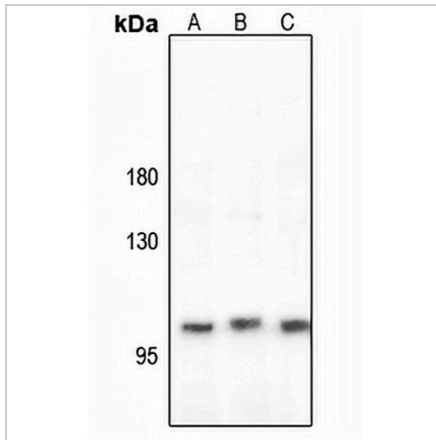
*Clone Number, Reactivity, Source/Host and Clonality can be found in the product name and Key Features section above.

DATASHEET

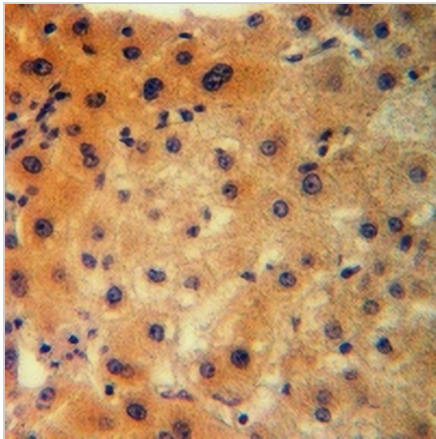
CLCN1 Rabbit Polyclonal Antibody

CAT. NO. APA08369

DATA



Western blot analysis of CLCN1 expression in HeLa (A), MG63 (B), mouse muscle (C) whole cell lysates. (Predicted band size: 108 kD; Observed band size: 108 kD)



Immunohistochemical analysis of CLCN1 staining in human liver cancer formalin fixed paraffin embedded tissue section. The section was pre-treated using heat mediated antigen retrieval with sodium citrate buffer (pH 6.0). The section was then incubated with the antibody at room temperature and detected using an HRP conjugated compact polymer system. DAB was used as the chromogen. The section was then counterstained with haematoxylin and mounted with DPX.

STORAGE

Store at 4°C short term. For long term storage, store at -20°C, avoiding freeze/thaw cycles.

NOTE

For Research Use Only. Not for diagnostic, therapeutics, prophylactic or in vivo use.