

DATASHEET

p22 phox Rabbit Polyclonal Antibody

CAT. NO. APA08372

KEY FEATURES

Target	p22 phox	Source / Host	Rabbit
Reactivity	Human, Mouse, Rat, Pig	Clonality	Polyclonal
Applications	WB	Conjugation	Unconjugated
Form / Buffer	Liquid in 0.42% Potassium phosphate, 0.87% Sodium chloride, pH 7.3, 30% glycerol, and 0.01% sodium azide.	Storage	at-20°C

BACKGROUND

Subunit of NADPH oxidase complexes that is required for the NADPH oxidase activity that generates, in various cell types, superoxide from molecular oxygen utilizing NADPH as an electron donor . Subunit of the phagocyte NADPH oxidase complex that mediates the transfer of electrons from cytosolic NADPH to O₂ to produce the superoxide anion (O₂⁻) . In the activated complex, electrons are first transferred from NADPH to flavin adenine dinucleotide (FAD) and subsequently transferred via two heme molecules to molecular oxygen, producing superoxide through an outer-sphere reaction .

APPLICATION

To ensure optimal assay performance, AREX recommends conducting reagent titration tailored to each testing system for optimal detection results.

WB	1:500 - 1:1000
----	----------------

*Results are sample-specific. Please refer to your local assay conditions and test parameters for reference.

PRODUCT OVERVIEW

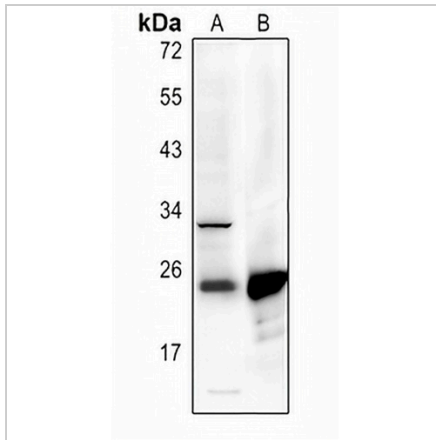
Description	Rabbit polyclonal antibody to p22 phox
Specificity	Recognizes endogenous levels of p22 phox protein.
Antibody Type	Primary antibody
Immunogen	KLH-conjugated synthetic peptide encompassing a sequence within the center region of human p22 phox. The exact sequence is proprietary.
Purification	The antibody was purified by immunogen affinity chromatography.
Molecular Weight	Predicted: 21 kD; Observed: 22 kD
Form/Buffer	Liquid in 0.42% Potassium phosphate, 0.87% Sodium chloride, pH 7.3, 30% glycerol, and 0.01% sodium azide.
Alternative Names	Cytochrome b-245 light chain; Cytochrome b(558) alpha chain; Cytochrome b558 subunit alpha; Neutrophil cytochrome b 22 kDa polypeptide; Superoxide-generating NADPH oxidase light chain subunit; p22 phagocyte B-cytochrome; p22-phox; p22phox
Gene Symbol	CYBA
Entrez Gene	1535(Human); 13057(Mouse); 79129(Rat)
SwissProt	P13498(Human); Q61462(Mouse); Q62737(Rat)

*AREX continuously optimizes our products. Webpage content may not reflect the latest updates. For inquiries, please contact info@arexbio.com or your local distributor.

*Clone Number, Reactivity, Source/Host and Clonality can be found in the product name and Key Features section above.

DATASHEET**p22 phox Rabbit Polyclonal Antibody**

CAT. NO. APA08372

DATA

Western blot analysis of p22 phox expression in HEK293T (A), mouse spleen (B) whole cell lysates. (Predicted band size: 21 kD; Observed band size: 22 kD)

STORAGE

Store at 4°C short term. For long term storage, store at -20°C, avoiding freeze/thaw cycles.

NOTE

For Research Use Only. Not for diagnostic, therapeutics, prophylactic or in vivo use.