

DATASHEET

Cytochrome P450 8B1 Rabbit Polyclonal Antibody

CAT. NO. APA08373

KEY FEATURES

Target	Cytochrome P450 8B1	Source / Host	Rabbit
Reactivity	Human, Mouse, Rat	Clonality	Polyclonal
Applications	WB, IF/ICC	Conjugation	Unconjugated
Form / Buffer	Liquid in 0.42% Potassium phosphate, 0.87% Sodium chloride, pH 7.3, 30% glycerol, and 0.01% sodium azide.	Storage	at-20°C

BACKGROUND

A cytochrome P450 monooxygenase involved in primary bile acid biosynthesis. Catalyzes the 12 α -hydroxylation of 7 α -hydroxy-4-cholesten-3-one, an intermediate metabolite in cholic acid biosynthesis. Controls biliary balance of cholic acid and chenodeoxycholic acid, ultimately regulating the intestinal absorption of dietary lipids. Mechanistically, uses molecular oxygen inserting one oxygen atom into a substrate, and reducing the second into a water molecule, with two electrons provided by NADPH via cytochrome P450 reductase (CPR; NADPH--hemoprotein reductase).

APPLICATION

To ensure optimal assay performance, AREX recommends conducting reagent titration tailored to each testing system for optimal detection results.

WB	1:500 - 1:1000
IF/ICC	1:50 - 1:200

*Results are sample-specific. Please refer to your local assay conditions and test parameters for reference.

PRODUCT OVERVIEW

Description	Rabbit polyclonal antibody to Cytochrome P450 8B1
Specificity	Recognizes endogenous levels of Cytochrome P450 8B1 protein.
Antibody Type	Primary antibody
Immunogen	KLH-conjugated synthetic peptide encompassing a sequence within the center region of human Cytochrome P450 8B1. The exact sequence is proprietary.
Purification	The antibody was purified by immunogen affinity chromatography.
Molecular Weight	Predicted: 58 kD; Observed: 58 kD
Form/Buffer	Liquid in 0.42% Potassium phosphate, 0.87% Sodium chloride, pH 7.3, 30% glycerol, and 0.01% sodium azide.
Alternative Names	CYP12; 7- α -hydroxycholest-4-en-3-one 12- α -hydroxylase; 7- α -hydroxy-4-cholesten-3-one 12- α -hydroxylase; CYPVIIIB1; Cytochrome P450 8B1; Sterol 12- α -hydroxylase
Gene Symbol	CYP8B1
Entrez Gene	1582(Human); 13124(Mouse)
SwissProt	Q9UNU6(Human); O88962(Mouse)

*AREX continuously optimizes our products. Webpage content may not reflect the latest updates. For inquiries, please contact info@arexbio.com or your local distributor.

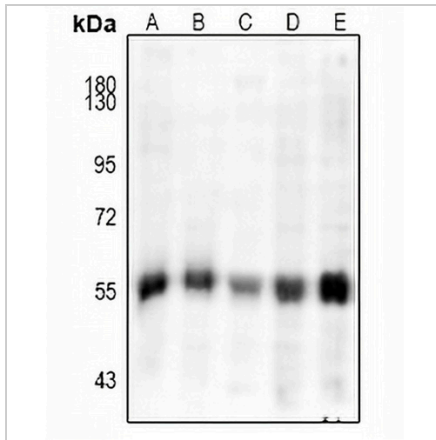
*Clone Number, Reactivity, Source/Host and Clonality can be found in the product name and Key Features section above.

DATASHEET

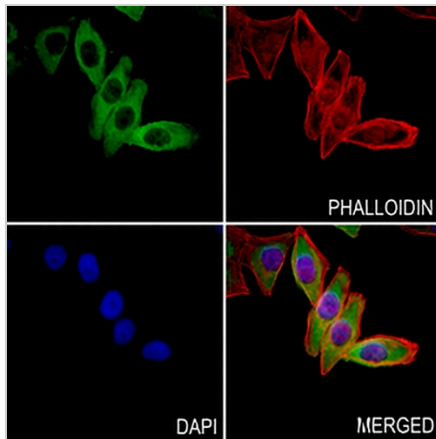
Cytochrome P450 8B1 Rabbit Polyclonal Antibody

CAT. NO. APA08373

DATA



Western blot analysis of Cytochrome P450 8B1 expression in 3T3L1 (A), A375 (B), rat liver (C), LO2 (D), HepG2 (E) whole cell lysates. (Predicted band size: 58 kD; Observed band size: 58 kD)



Immunofluorescent analysis of Cytochrome P450 8B1 staining in MCF7 cells. Formalin-fixed cells were permeabilized with 0.1% Triton X-100 in TBS for 5-10 minutes and blocked with 3% BSA-PBS for 30 minutes at room temperature. Cells were probed with the primary antibody in 3% BSA-PBS and incubated overnight at 4 °C in a humidified chamber. Cells were washed with PBST and incubated with a AREX® Fluor 488 - conjugated secondary antibody (green) in PBS at room temperature in the dark. Phalloidin - AREX® Fluor 594 was used to stain Actin filaments (red). DAPI was used to stain the cell nuclei (blue).

STORAGE

Store at 4°C short term. For long term storage, store at -20°C, avoiding freeze/thaw cycles.

NOTE

For Research Use Only. Not for diagnostic, therapeutics, prophylactic or in vivo use.