

DATASHEET

EPHA3 (Phospho-Y602) Rabbit Polyclonal Antibody

CAT. NO. APA08379

KEY FEATURES

Target	EPHA3 (Phospho-Y602)	Source / Host	Rabbit
Reactivity	Human, Mouse, Rat, Bovine, Pig	Clonality	Polyclonal
Applications	WB	Conjugation	Unconjugated
Form / Buffer	Liquid in 0.42% Potassium phosphate, 0.87% Sodium chloride, pH 7.3, 30% glycerol, and 0.01% sodium azide.	Storage	at-20°C

BACKGROUND

Receptor tyrosine kinase which binds promiscuously membrane-bound ephrin family ligands residing on adjacent cells, leading to contact-dependent bidirectional signaling into neighboring cells. The signaling pathway downstream of the receptor is referred to as forward signaling while the signaling pathway downstream of the ephrin ligand is referred to as reverse signaling. Highly promiscuous for ephrin-A ligands it binds preferentially EFNA5. Upon activation by EFNA5 regulates cell-cell adhesion, cytoskeletal organization and cell migration. Also activated by EFNA1, inhibiting epithelial-to-mesenchymal transition of cardiac cells and playing a role in heart development. Involved in the retinotectal mapping of neurons.

APPLICATION

To ensure optimal assay performance, AREX recommends conducting reagent titration tailored to each testing system for optimal detection results.

WB	1:500 - 1:1000
----	----------------

*Results are sample-specific. Please refer to your local assay conditions and test parameters for reference.

PRODUCT OVERVIEW

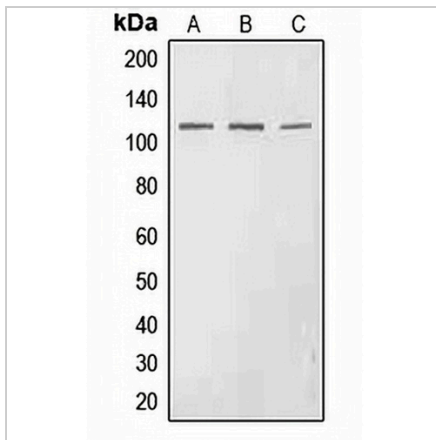
Description	Rabbit polyclonal antibody to EPHA3 (Phospho-Y602)
Specificity	Recognizes endogenous levels of EPHA3 protein only when phosphorylated at Y602.
Antibody Type	Primary antibody
Immunogen	KLH-conjugated synthetic phosphopeptide corresponding to residues surrounding Y602 of human EPHA3 protein. The exact sequence is proprietary.
Purification	The antibody was purified by immunogen affinity chromatography.
Molecular Weight	Predicted: 110 kD; Observed: 110 kD
Form/Buffer	Liquid in 0.42% Potassium phosphate, 0.87% Sodium chloride, pH 7.3, 30% glycerol, and 0.01% sodium azide.
Alternative Names	ETK; ETK1; HEK; TYRO4; Ephrin type-A receptor 3; EPH-like kinase 4; EK4; hEK4; HEK; Human embryo kinase; Tyrosine-protein kinase TYRO4; Tyrosine-protein kinase receptor ETK1; Eph-like tyrosine kinase 1
Gene Symbol	EPHA3
Entrez Gene	2042(Human); 29210(Rat)
SwissProt	P29320(Human); P29319(Mouse); O08680(Rat)

*AREX continuously optimizes our products. Webpage content may not reflect the latest updates. For inquiries, please contact info@arexbio.com or your local distributor.

*Clone Number, Reactivity, Source/Host and Clonality can be found in the product name and Key Features section above.

DATASHEET**EPHA3 (Phospho-Y602) Rabbit Polyclonal Antibody**

CAT. NO. APA08379

DATA

Western blot analysis of EPHA3 (Phospho-Y602) expression in HEK293T (A), SP2/0 (B), H9C2 (C) whole cell lysates. (Predicted band size: 110 kD; Observed band size: 110 kD)

STORAGE

Store at 4°C short term. For long term storage, store at -20°C, avoiding freeze/thaw cycles.

NOTE

For Research Use Only. Not for diagnostic, therapeutics, prophylactic or in vivo use.