

DATASHEET

CD42b Rabbit Polyclonal Antibody

CAT. NO. APA08385

KEY FEATURES

Target	CD42b	Source / Host	Rabbit
Reactivity	Human, Mouse, Rat	Clonality	Polyclonal
Applications	WB	Conjugation	Unconjugated
Form / Buffer	Liquid in 0.42% Potassium phosphate, 0.87% Sodium chloride, pH 7.3, 30% glycerol, and 0.01% sodium azide.		Storage at -20°C

BACKGROUND

GP-Ib, a surface membrane protein of platelets, participates in the formation of platelet plugs by binding to the A1 domain of vWF, which is already bound to the subendothelium.

APPLICATION

To ensure optimal assay performance, AREX recommends conducting reagent titration tailored to each testing system for optimal detection results.

WB	1:500 - 1:1000
----	----------------

*Results are sample-specific. Please refer to your local assay conditions and test parameters for reference.

PRODUCT OVERVIEW

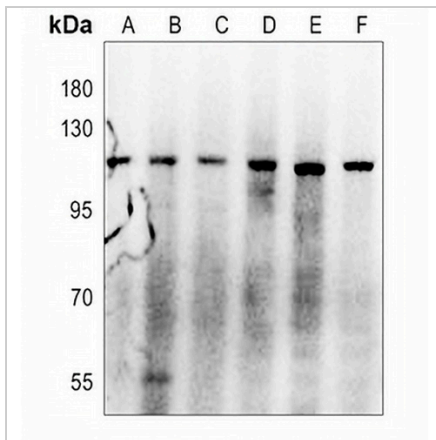
Description	Rabbit polyclonal antibody to CD42b
Specificity	Recognizes endogenous levels of CD42b protein.
Antibody Type	Primary antibody
Immunogen	KLH-conjugated synthetic peptide encompassing a sequence within the center region of human CD42b. The exact sequence is proprietary.
Purification	The antibody was purified by immunogen affinity chromatography.
Molecular Weight	Predicted: 71 kD; Observed: 120 kD
Form/Buffer	Liquid in 0.42% Potassium phosphate, 0.87% Sodium chloride, pH 7.3, 30% glycerol, and 0.01% sodium azide.
Alternative Names	Platelet glycoprotein Ib alpha chain; GP-Ib alpha; GPIb-alpha; GPIbA; Glycoprotein Ibalpha; Antigen CD42b-alpha; CD42b
Gene Symbol	GP1BA
Entrez Gene	2811(Human); 14723(Mouse)
SwissProt	P07359(Human); O35930(Mouse)

*AREX continuously optimizes our products. Webpage content may not reflect the latest updates. For inquiries, please contact info@arexbio.com or your local distributor.

*Clone Number, Reactivity, Source/Host and Clonality can be found in the product name and Key Features section above.

DATASHEET**CD42b Rabbit Polyclonal Antibody**

CAT. NO. APA08385

DATA

Western blot analysis of CD42b expression in MEF (A), PC12 (B), LOVO (C), SGC7901 (D), MCF7 (E), U87MG (F) whole cell lysates. (Predicted band size: 71 kD; Observed band size: 120 kD)

STORAGE

Store at 4°C short term. For long term storage, store at -20°C, avoiding freeze/thaw cycles.

NOTE

For Research Use Only. Not for diagnostic, therapeutics, prophylactic or in vivo use.