

**DATASHEET**

**MTH1 Rabbit Polyclonal Antibody**

CAT. NO. APA08398

**KEY FEATURES**

Target	MTH1	Source / Host	Rabbit
Reactivity	Human	Clonality	Polyclonal
Applications	WB	Conjugation	Unconjugated
Form / Buffer	Liquid in 0.42% Potassium phosphate, 0.87% Sodium chloride, pH 7.3, 30% glycerol, and 0.01% sodium azide.		Storage at -20°C

**BACKGROUND**

Oxidized purine nucleoside triphosphate hydrolase which is a prominent sanitizer of the oxidized nucleotide pool . Catalyzes the hydrolysis of 2-oxo-dATP (2-hydroxy-dATP) into 2-oxo-dAMP . Also has a significant hydrolase activity toward 2-oxo-ATP, 8-oxo-dGTP and 8-oxo-dATP . Through the hydrolysis of oxidized purine nucleoside triphosphates, prevents their incorporation into DNA and the subsequent transversions A:T to C:G and G:C to T:A . Also catalyzes the hydrolysis of methylated purine nucleoside triphosphate preventing their integration into DNA . Through this antimutagenic activity protects cells from oxidative stress .

**APPLICATION**

To ensure optimal assay performance, AREX recommends conducting reagent titration tailored to each testing system for optimal detection results.

WB	1:500 - 1:1000
----	----------------

\*Results are sample-specific. Please refer to your local assay conditions and test parameters for reference.

**PRODUCT OVERVIEW**

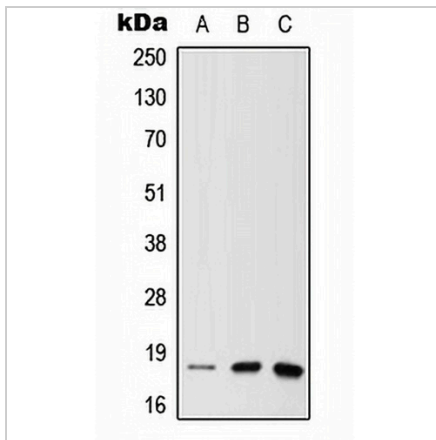
Description	Rabbit polyclonal antibody to MTH1
Specificity	Recognizes endogenous levels of MTH1 protein.
Antibody Type	Primary antibody
Immunogen	KLH-conjugated synthetic peptide encompassing a sequence within the N-term region of human MTH1. The exact sequence is proprietary.
Purification	The antibody was purified by immunogen affinity chromatography.
Molecular Weight	Predicted: 17; Observed: 18 kD
Form/Buffer	Liquid in 0.42% Potassium phosphate, 0.87% Sodium chloride, pH 7.3, 30% glycerol, and 0.01% sodium azide.
Alternative Names	MTH1; 7,8-dihydro-8-oxoguanine triphosphatase; 2-hydroxy-dATP diphosphatase; 8-oxo-dGTPase; Nucleoside diphosphate-linked moiety X motif 1; Nudix motif 1
Gene Symbol	NUDT1
Entrez Gene	4521(Human)
SwissProt	P36639(Human)

\*AREX continuously optimizes our products. Webpage content may not reflect the latest updates. For inquiries, please contact [info@arexbio.com](mailto:info@arexbio.com) or your local distributor.

\*Clone Number, Reactivity, Source/Host and Clonality can be found in the product name and Key Features section above.

**DATASHEET****MTH1 Rabbit Polyclonal Antibody**

CAT. NO. APA08398

**DATA**

Western blot analysis of MTH1 expression in A549 (A), mouse liver (B), rat brain (C) whole cell lysates. (Predicted band size: 17; 19; 20; 22 kD; Observed band size: 18 kD)

**STORAGE**

Store at 4°C short term. For long term storage, store at -20°C, avoiding freeze/thaw cycles.

**NOTE**

For Research Use Only. Not for diagnostic, therapeutics, prophylactic or in vivo use.