

DATASHEET

NPPC Rabbit Polyclonal Antibody

CAT. NO. APA08406

KEY FEATURES

Target	NPPC	Source / Host	Rabbit
Reactivity	Human, Mouse, Rat, Dog, Pig	Clonality	Polyclonal
Applications	WB	Conjugation	Unconjugated
Form / Buffer	Liquid in 0.42% Potassium phosphate, 0.87% Sodium chloride, pH 7.3, 30% glycerol, and 0.01% sodium azide.		Storage at-20°C

BACKGROUND

Hormone which plays a role in endochondral ossification through regulation of cartilaginous growth plate chondrocytes proliferation and differentiation . May also be vasoactive and natriuretic . Acts by specifically binding and stimulating NPR2 to produce cGMP . Binds the clearance receptor NPR3 .

APPLICATION

To ensure optimal assay performance, AREX recommends conducting reagent titration tailored to each testing system for optimal detection results.

WB	1:500 - 1:1000
----	----------------

*Results are sample-specific. Please refer to your local assay conditions and test parameters for reference.

PRODUCT OVERVIEW

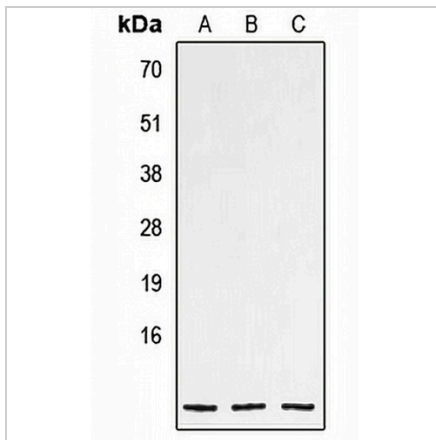
Description	Rabbit polyclonal antibody to NPPC
Specificity	Recognizes endogenous levels of NPPC protein.
Antibody Type	Primary antibody
Immunogen	KLH-conjugated synthetic peptide encompassing a sequence within the center region of human NPPC. The exact sequence is proprietary.
Purification	The antibody was purified by immunogen affinity chromatography.
Molecular Weight	Predicted: 13 kD; Observed: 10 kD
Form/Buffer	Liquid in 0.42% Potassium phosphate, 0.87% Sodium chloride, pH 7.3, 30% glycerol, and 0.01% sodium azide.
Alternative Names	CNP2; C-type natriuretic peptide
Gene Symbol	NPPC
Entrez Gene	4880(Human); 18159(Mouse); 114593(Rat)
SwissProt	P23582(Human); Q61839(Mouse); P55207(Rat)

*AREX continuously optimizes our products. Webpage content may not reflect the latest updates. For inquiries, please contact info@arexbio.com or your local distributor.

*Clone Number, Reactivity, Source/Host and Clonality can be found in the product name and Key Features section above.

DATASHEET**NPPC Rabbit Polyclonal Antibody**

CAT. NO. APA08406

DATA

Western blot analysis of NPPC expression in HEK293T (A), mouse heart (B), rat heart (C) whole cell lysates. (Predicted band size: 13 kD; Observed band size: 10 kD)

STORAGE

Store at 4°C short term. For long term storage, store at -20°C, avoiding freeze/thaw cycles.

NOTE

For Research Use Only. Not for diagnostic, therapeutics, prophylactic or in vivo use.