

DATASHEET

ORC2 Rabbit Polyclonal Antibody

CAT. NO. APA08407

KEY FEATURES

| | | | |
|---------------|---|---------------|---------------------|
| Target | ORC2 | Source / Host | Rabbit |
| Reactivity | Human, Mouse, Rat, Monkey | Clonality | Polyclonal |
| Applications | WB | Conjugation | Unconjugated |
| Form / Buffer | Liquid in 0.42% Potassium phosphate, 0.87% Sodium chloride, pH 7.3, 30% glycerol, and 0.01% sodium azide. | | Storage at -20°C |

BACKGROUND

Component of the origin recognition complex (ORC) that binds origins of replication. DNA-binding is ATP-dependent. The specific DNA sequences that define origins of replication have not been identified yet. ORC is required to assemble the pre-replication complex necessary to initiate DNA replication. Binds histone H3 and H4 trimethylation marks H3K9me3, H3K20me3 and H4K27me3. Stabilizes LRWD1, by protecting it from ubiquitin-mediated proteasomal degradation. Also stabilizes ORC3.

APPLICATION

To ensure optimal assay performance, AREX recommends conducting reagent titration tailored to each testing system for optimal detection results.

| | |
|----|----------------|
| WB | 1:500 - 1:1000 |
|----|----------------|

*Results are sample-specific. Please refer to your local assay conditions and test parameters for reference.

PRODUCT OVERVIEW

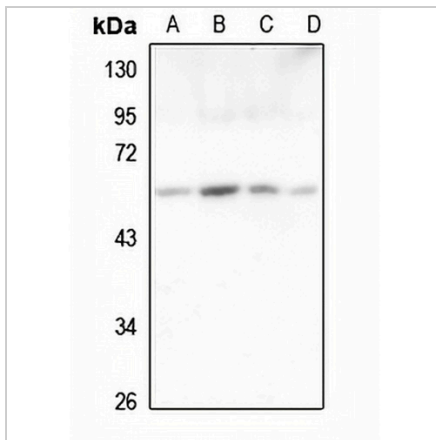
| | |
|-------------------|---|
| Description | Rabbit polyclonal antibody to ORC2 |
| Specificity | Recognizes endogenous levels of ORC2 protein. |
| Antibody Type | Primary antibody |
| Immunogen | KLH-conjugated synthetic peptide encompassing a sequence within the center region of human ORC2. The exact sequence is proprietary. |
| Purification | The antibody was purified by immunogen affinity chromatography. |
| Molecular Weight | Predicted: 65 kD; Observed: 66 kD |
| Form/Buffer | Liquid in 0.42% Potassium phosphate, 0.87% Sodium chloride, pH 7.3, 30% glycerol, and 0.01% sodium azide. |
| Alternative Names | ORC2L; Origin recognition complex subunit 2 |
| Gene Symbol | ORC2 |
| Entrez Gene | 4999(Human); 18393(Mouse); 301430(Rat) |
| SwissProt | Q13416(Human); Q60862(Mouse); Q75PQ8(Rat) |

*AREX continuously optimizes our products. Webpage content may not reflect the latest updates. For inquiries, please contact info@arexbio.com or your local distributor.

*Clone Number, Reactivity, Source/Host and Clonality can be found in the product name and Key Features section above.

DATASHEET**ORC2 Rabbit Polyclonal Antibody**

CAT. NO. APA08407

DATA

Western blot analysis of ORC2 expression in HeLa (A), HGC27 (B), U2OS (C), A549 (D) whole cell lysates. (Predicted band size: 65 kD; Observed band size: 66 kD)

STORAGE

Store at 4°C short term. For long term storage, store at -20°C, avoiding freeze/thaw cycles.

NOTE

For Research Use Only. Not for diagnostic, therapeutics, prophylactic or in vivo use.