

DATASHEET
PLSCR1 Rabbit Polyclonal Antibody
CAT. NO. APA08410
KEY FEATURES

Target	PLSCR1	Source / Host	Rabbit
Reactivity	Human, Mouse, Rat, Bovine, Dog, Pig, Rabbit, Sheep	Clonality	Polyclonal
Applications	WB	Conjugation	Unconjugated
Form / Buffer	Liquid in 0.42% Potassium phosphate, 0.87% Sodium chloride, pH 7.3, 30% glycerol, and 0.01% sodium azide.		Storage at-20°C

BACKGROUND

Catalyzes calcium-induced ATP-independent rapid bidirectional and non-specific movement of phospholipids (lipid scrambling or lipid flip-flop) between the inner and outer leaflet of the plasma membrane resulting in collapse of the phospholipid asymmetry which leads to phosphatidylserine externalization on the cell surface between the inner and outer leaflet of the plasma membrane resulting in collapse of the phospholipid asymmetry which leads to phosphatidylserine externalization on the cell surface . Mediates calcium-dependent phosphatidylserine externalization and apoptosis in neurons via its association with TRPC5 . Also exhibits magnesium-dependent nuclease activity against double-stranded DNA and RNA but not single-stranded DNA and can enhance DNA decatenation mediated by TOP2A .

APPLICATION

To ensure optimal assay performance, AREX recommends conducting reagent titration tailored to each testing system for optimal detection results.

WB	1:500 - 1:1000
----	----------------

*Results are sample-specific. Please refer to your local assay conditions and test parameters for reference.

PRODUCT OVERVIEW

Description	Rabbit polyclonal antibody to PLSCR1
Specificity	Recognizes endogenous levels of PLSCR1 protein.
Antibody Type	Primary antibody
Immunogen	KLH-conjugated synthetic peptide encompassing a sequence within the center region of human PLSCR1. The exact sequence is proprietary.
Purification	The antibody was purified by immunogen affinity chromatography.
Molecular Weight	Predicted: 35 kD; Observed: 38 kD
Form/Buffer	Liquid in 0.42% Potassium phosphate, 0.87% Sodium chloride, pH 7.3, 30% glycerol, and 0.01% sodium azide.
Alternative Names	Phospholipid scramblase 1; PL scramblase 1; Ca(2+)-dependent phospholipid scramblase 1; Erythrocyte phospholipid scramblase; MmTRA1b
Gene Symbol	PLSCR1
Entrez Gene	5359(Human); 22038(Mouse); 117540(Rat)
SwissProt	O15162(Human); Q9JJ00(Mouse); P58195(Rat)

*AREX continuously optimizes our products. Webpage content may not reflect the latest updates. For inquiries, please contact info@arexbio.com or your local distributor.

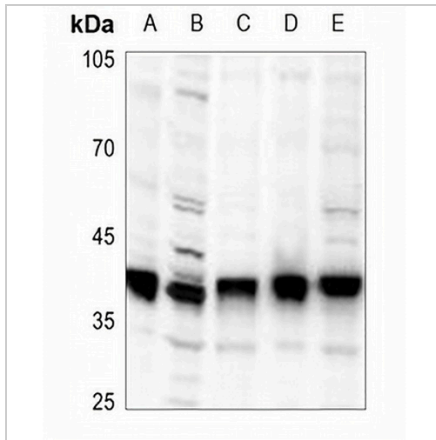
*Clone Number, Reactivity, Source/Host and Clonality can be found in the product name and Key Features section above.

DATASHEET

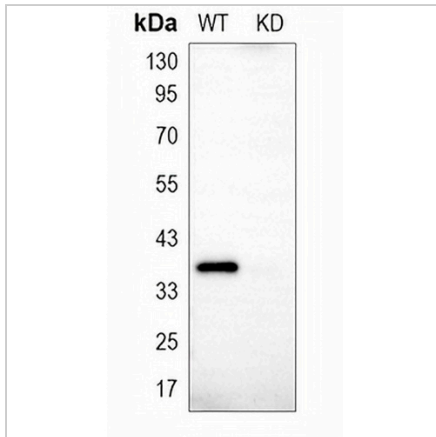
PLSCR1 Rabbit Polyclonal Antibody

CAT. NO. APA08410

DATA



Western blot analysis of PLSCR1 expression in H9C2 (A), CT26 (B), HepG2 (C), HCT116 (D), A549 (E) whole cell lysates. (Predicted band size: 35 kD; Observed band size: 38 kD)



Western blot analysis of PLSCR1 expression in wild type (WT) and knockdown (KD) HeLa cell lysates.

STORAGE

Store at 4°C short term. For long term storage, store at -20°C, avoiding freeze/thaw cycles.

NOTE

For Research Use Only. Not for diagnostic, therapeutics, prophylactic or in vivo use.