

**DATASHEET**

**CTIP (Phospho-S327) Rabbit Polyclonal Antibody**

CAT. NO. APA08417

**KEY FEATURES**

Target	CTIP (Phospho-S327)	Source / Host	Rabbit
Reactivity	Human, Mouse, Monkey	Clonality	Polyclonal
Applications	WB	Conjugation	Unconjugated
Form / Buffer	Liquid in 0.42% Potassium phosphate, 0.87% Sodium chloride, pH 7.3, 30% glycerol, and 0.01% sodium azide.		Storage at -20°C

**BACKGROUND**

Endonuclease that cooperates with the MRE11-RAD50-NBN (MRN) complex in DNA-end resection, the first step of double-strand break (DSB) repair through the homologous recombination (HR) pathway complex in DNA-end resection, the first step of double-strand break (DSB) repair through the homologous recombination (HR) pathway . HR is restricted to S and G2 phases of the cell cycle and preferentially repairs DSBs resulting from replication fork collapse . Key determinant of DSB repair pathway choice, as it commits cells to HR by preventing classical non-homologous end-joining (NHEJ) .

**APPLICATION**

To ensure optimal assay performance, AREX recommends conducting reagent titration tailored to each testing system for optimal detection results.

WB	1:500 - 1:1000
----	----------------

\*Results are sample-specific. Please refer to your local assay conditions and test parameters for reference.

**PRODUCT OVERVIEW**

Description	Rabbit polyclonal antibody to CTIP (Phospho-S327)
Specificity	Recognizes endogenous levels of CTIP protein only when phosphorylated at S327.
Antibody Type	Primary antibody
Immunogen	KLH-conjugated synthetic phosphopeptide corresponding to residues surrounding S327 of human CTIP protein. The exact sequence is proprietary.
Purification	The antibody was purified by immunogen affinity chromatography.
Molecular Weight	Predicted: 101 kD; Observed: 101 kD
Form/Buffer	Liquid in 0.42% Potassium phosphate, 0.87% Sodium chloride, pH 7.3, 30% glycerol, and 0.01% sodium azide.
Alternative Names	CTIP; DNA endonuclease RBBP8; CtBP-interacting protein; CtIP; Retinoblastoma-binding protein 8; RBBP-8; Retinoblastoma-interacting protein and myosin-like; RIM; Sporulation in the absence of SPO11 protein 2 homolog; SAE2
Gene Symbol	RBBP8
Entrez Gene	5932(Human); 225182(Mouse)
SwissProt	Q99708(Human); Q80YR6(Mouse)

\*AREX continuously optimizes our products. Webpage content may not reflect the latest updates. For inquiries, please contact [info@arexbio.com](mailto:info@arexbio.com) or your local distributor.

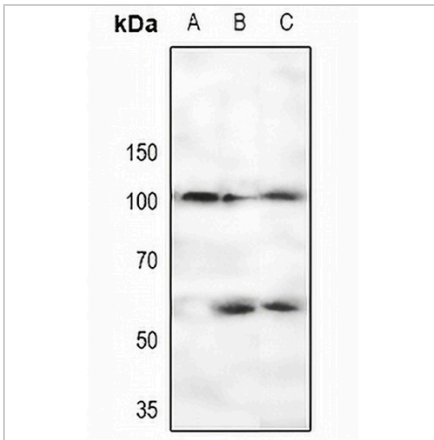
\*Clone Number, Reactivity, Source/Host and Clonality can be found in the product name and Key Features section above.

**DATASHEET**

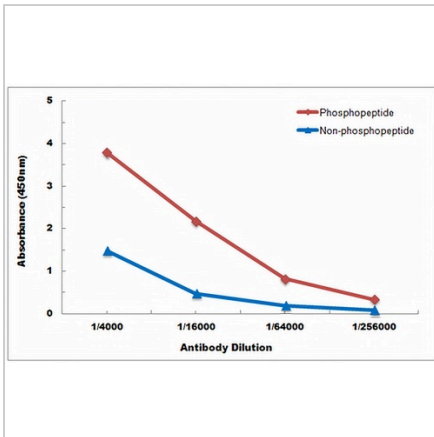
**CTIP (Phospho-S327) Rabbit Polyclonal Antibody**

CAT. NO. APA08417

**DATA**



Western blot analysis of CTIP (Phospho-S327) expression in U87 (A), PC3 (B), MCF7 (C) whole cell lysates. (Predicted band size: 101 kD; Observed band size: 101 kD)



Direct ELISA antibody dose-response curve using Anti-CTIP (Phospho-S327) Antibody. Antigen (Phosphopeptide and non-phosphopeptide) concentration is 5 ug/ml. Goat Anti-Rabbit IgG (H&L) - HRP was used as the secondary antibody, and signal was developed by TMB substrate.

**STORAGE**

Store at 4°C short term. For long term storage, store at -20°C, avoiding freeze/thaw cycles.

**NOTE**

For Research Use Only. Not for diagnostic, therapeutics, prophylactic or in vivo use.