

DATASHEET

RPS27 Rabbit Polyclonal Antibody

CAT. NO. APA08421

KEY FEATURES

Target	RPS27	Source / Host	Rabbit
Reactivity	Human, Mouse, Rat, Bovine, Dog, Monkey	Clonality	Polyclonal
Applications	WB, IF/ICC	Conjugation	Unconjugated
Form / Buffer	Liquid in 0.42% Potassium phosphate, 0.87% Sodium chloride, pH 7.3, 30% glycerol, and 0.01% sodium azide.		Storage at -20°C

BACKGROUND

Component of the small ribosomal subunit . The ribosome is a large ribonucleoprotein complex responsible for the synthesis of proteins in the cell . Required for proper rRNA processing and maturation of 18S rRNAs . Part of the small subunit (SSU) processome, first precursor of the small eukaryotic ribosomal subunit. During the assembly of the SSU processome in the nucleolus, many ribosome biogenesis factors, an RNA chaperone and ribosomal proteins associate with the nascent pre-rRNA and work in concert to generate RNA folding, modifications, rearrangements and cleavage as well as targeted degradation of pre-ribosomal RNA by the RNA exosome .

APPLICATION

To ensure optimal assay performance, AREX recommends conducting reagent titration tailored to each testing system for optimal detection results.

WB	1:500 - 1:1000
IF/ICC	1:50 - 1:200

*Results are sample-specific. Please refer to your local assay conditions and test parameters for reference.

PRODUCT OVERVIEW

Description	Rabbit polyclonal antibody to RPS27
Specificity	Recognizes endogenous levels of RPS27 protein.
Antibody Type	Primary antibody
Immunogen	KLH-conjugated synthetic peptide encompassing a sequence within the N-term region of human RPS27. The exact sequence is proprietary.
Purification	The antibody was purified by immunogen affinity chromatography.
Molecular Weight	Predicted: 9 kD; Observed: 9 kD
Form/Buffer	Liquid in 0.42% Potassium phosphate, 0.87% Sodium chloride, pH 7.3, 30% glycerol, and 0.01% sodium azide.
Alternative Names	MPS1; 40S ribosomal protein S27; Metallopan-stimulin 1; MPS-1
Gene Symbol	RPS27
Entrez Gene	6232(Human); 100043813; 57294(Mouse); 94266(Rat)
SwissProt	P42677(Human); Q6ZWU9(Mouse); Q71TY3(Rat)

*AREX continuously optimizes our products. Webpage content may not reflect the latest updates. For inquiries, please contact info@arexbio.com or your local distributor.

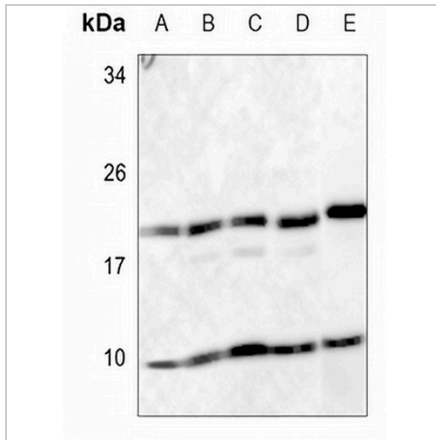
*Clone Number, Reactivity, Source/Host and Clonality can be found in the product name and Key Features section above.

DATASHEET

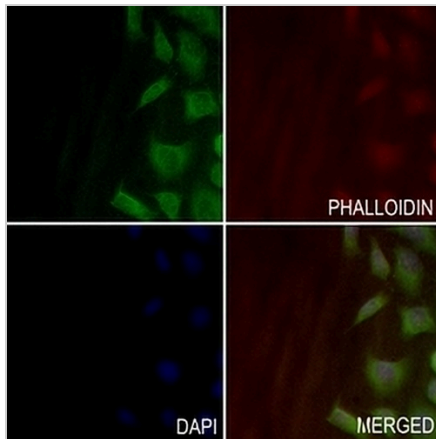
RPS27 Rabbit Polyclonal Antibody

CAT. NO. APA08421

DATA



Western blot analysis of RPS27 expression in HEK293T (A), HepG2 (B), PC3 (C), mouse spleen (D), rat spleen (E) whole cell lysates. (Predicted band size: 9 kD; Observed band size: 9 kD)



Immunofluorescent analysis of RPS27 staining in A549 cells. Formalin-fixed cells were permeabilized with 0.1% Triton X-100 in TBS for 5-10 minutes and blocked with 3% BSA-PBS for 30 minutes at room temperature. Cells were probed with the primary antibody in 3% BSA-PBS and incubated overnight at 4 °C in a humidified chamber. Cells were washed with PBST and incubated with a AREX® Fluor 488 -conjugated secondary antibody (green) in PBS at room temperature in the dark. Phalloidin - AREX® Fluor 594 was used to stain Actin filaments (red). DAPI was used to stain the cell nuclei (blue).

STORAGE

Store at 4°C short term. For long term storage, store at -20°C, avoiding freeze/thaw cycles.

NOTE

For Research Use Only. Not for diagnostic, therapeutics, prophylactic or in vivo use.