

DATASHEET

JIP4 Rabbit Polyclonal Antibody

CAT. NO. APA08444

KEY FEATURES

Target	JIP4	Source / Host	Rabbit
Reactivity	Human, Mouse, Rat, Bovine	Clonality	Polyclonal
Applications	WB, IF/ICC	Conjugation	Unconjugated
Form / Buffer	Liquid in 0.42% Potassium phosphate, 0.87% Sodium chloride, pH 7.3, 30% glycerol, and 0.01% sodium azide.		Storage at -20°C

BACKGROUND

The JNK-interacting protein (JIP) group of scaffold proteins selectively mediates JNK signaling by aggregating specific components of the MAPK cascade to form a functional JNK signaling module. The JIP group of scaffold proteins selectively mediates JNK signaling by aggregating specific components of the MAPK cascade to form a functional JNK signaling module. Regulates lysosomal positioning by acting as an adapter protein which links PIP4P1-positive lysosomes to the dynein-dynactin complex. Assists PIKFYVE selective functionality in microtubule-based endosome-to-TGN trafficking.

APPLICATION

To ensure optimal assay performance, AREX recommends conducting reagent titration tailored to each testing system for optimal detection results.

WB	1:500 - 1:1000
IF/ICC	1:50 - 1:200

*Results are sample-specific. Please refer to your local assay conditions and test parameters for reference.

PRODUCT OVERVIEW

Description	Rabbit polyclonal antibody to JIP4
Specificity	Recognizes endogenous levels of JIP4 protein.
Antibody Type	Primary antibody
Immunogen	KLH-conjugated synthetic peptide encompassing a sequence within the center region of human JIP4. The exact sequence is proprietary.
Purification	The antibody was purified by immunogen affinity chromatography.
Molecular Weight	Predicted: 146 kD; Observed: 190 kD
Form/Buffer	Liquid in 0.42% Potassium phosphate, 0.87% Sodium chloride, pH 7.3, 30% glycerol, and 0.01% sodium azide.
Alternative Names	HSS; KIAA0516; MAPK8IP4; SYD1; C-Jun-amino-terminal kinase-interacting protein 4; JIP-4; JNK-interacting protein 4; Cancer/testis antigen 89; CT89; Human lung cancer oncogene 6 protein; HLC-6; JNK-associated leucine-zipper protein; JLP; Mitogen-activated protein kinase 8-interacting protein 4; Proliferation-inducing protein 6; Protein highly expressed in testis; PHET; Sperm surface protein; Sperm-associated antigen 9; Sperm-specific protein; Sunday driver 1
Gene Symbol	SPAG9
Entrez Gene	9043(Human); 70834(Mouse)
SwissProt	O60271(Human); Q58A65(Mouse)

*AREX continuously optimizes our products. Webpage content may not reflect the latest updates. For inquiries, please contact info@arexbio.com or your local distributor.

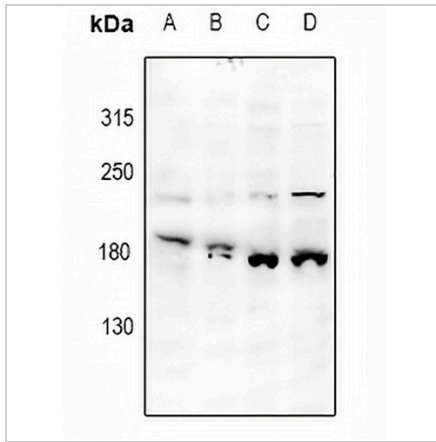
*Clone Number, Reactivity, Source/Host and Clonality can be found in the product name and Key Features section above.

DATASHEET

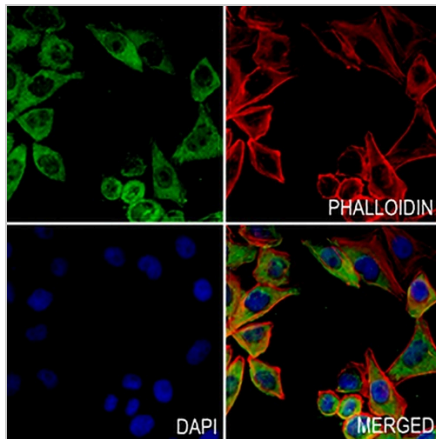
JIP4 Rabbit Polyclonal Antibody

CAT. NO. APA08444

DATA



Western blot analysis of JIP4 expression in AML12 (A), U87MG (B), EC9706 (C), SGC7901 (D) whole cell lysates. (Predicted band size: 146 kD; Observed band size: 190 kD)



Immunofluorescent analysis of JIP4 staining in MCF7 cells. Formalin-fixed cells were permeabilized with 0.1% Triton X-100 in TBS for 5-10 minutes and blocked with 3% BSA-PBS for 30 minutes at room temperature. Cells were probed with the primary antibody in 3% BSA-PBS and incubated overnight at 4 °C in a humidified chamber. Cells were washed with PBST and incubated with a AREX® Fluor 488 -conjugated secondary antibody (green) in PBS at room temperature in the dark. Phalloidin - AREX® Fluor 594 was used to stain Actin filaments (red). DAPI was used to stain the cell nuclei (blue).

STORAGE

Store at 4°C short term. For long term storage, store at -20°C, avoiding freeze/thaw cycles.

NOTE

For Research Use Only. Not for diagnostic, therapeutics, prophylactic or in vivo use.