

DATASHEET

TLK1 (Phospho-S743) Rabbit Polyclonal Antibody

CAT. NO. APA08449

KEY FEATURES

Target	TLK1 (Phospho-S743)	Source / Host	Rabbit
Reactivity	Human, Rat, Monkey	Clonality	Polyclonal
Applications	WB	Conjugation	Unconjugated
Form / Buffer	Liquid in 0.42% Potassium phosphate, 0.87% Sodium chloride, pH 7.3, 30% glycerol, and 0.01% sodium azide.		Storage at -20°C

BACKGROUND

Rapidly and transiently inhibited by phosphorylation following the generation of DNA double-stranded breaks during S-phase. This is cell cycle checkpoint and ATM-pathway dependent and appears to regulate processes involved in chromatin assembly. Isoform 3 phosphorylates and enhances the stability of the t-SNARE SNAP23, augmenting its assembly with syntaxin. Isoform 3 protects the cells from the ionizing radiation by facilitating the repair of DSBs. In vitro, phosphorylates histone H3 at 'Ser-10'.

APPLICATION

To ensure optimal assay performance, AREX recommends conducting reagent titration tailored to each testing system for optimal detection results.

WB	1:500 - 1:1000
----	----------------

*Results are sample-specific. Please refer to your local assay conditions and test parameters for reference.

PRODUCT OVERVIEW

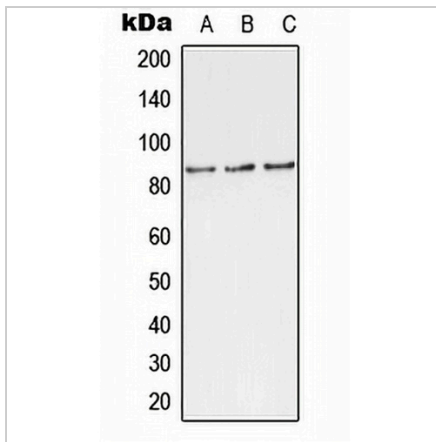
Description	Rabbit polyclonal antibody to TLK1 (Phospho-S743)
Specificity	Recognizes endogenous levels of TLK1 protein only when phosphorylated at S743.
Antibody Type	Primary antibody
Immunogen	KLH-conjugated synthetic phosphopeptide corresponding to residues surrounding S743 of human TLK1 protein. The exact sequence is proprietary.
Purification	The antibody was purified by immunogen affinity chromatography.
Molecular Weight	Predicted: 86 kD; Observed: 86 kD
Form/Buffer	Liquid in 0.42% Potassium phosphate, 0.87% Sodium chloride, pH 7.3, 30% glycerol, and 0.01% sodium azide.
Alternative Names	TLK1; KIAA0137; Serine/threonine-protein kinase tousled-like 1; PKU-beta; Tousled-like kinase 1
Gene Symbol	TLK1
Entrez Gene	9874(Human)
SwissProt	Q9UKI8(Human)

*AREX continuously optimizes our products. Webpage content may not reflect the latest updates. For inquiries, please contact info@arexbio.com or your local distributor.

*Clone Number, Reactivity, Source/Host and Clonality can be found in the product name and Key Features section above.

DATASHEET**TLK1 (Phospho-S743) Rabbit Polyclonal Antibody**

CAT. NO. APA08449

DATA

Western blot analysis of TLK1 (Phospho-S743) expression in MCF7 (A), rat brain (B), H9C2 (C) whole cell lysates. (Predicted band size: 86 kD; Observed band size: 86 kD)

STORAGE

Store at 4°C short term. For long term storage, store at -20°C, avoiding freeze/thaw cycles.

NOTE

For Research Use Only. Not for diagnostic, therapeutics, prophylactic or in vivo use.