

DATASHEET

SEC61B Rabbit Polyclonal Antibody

CAT. NO. APA08454

KEY FEATURES

Target	SEC61B	Source / Host	Rabbit
Reactivity	Human, Mouse, Rat, Bovine, Dog	Clonality	Polyclonal
Applications	WB, IHC	Conjugation	Unconjugated
Form / Buffer	Liquid in 0.42% Potassium phosphate, 0.87% Sodium chloride, pH 7.3, 30% glycerol, and 0.01% sodium azide.		Storage at -20°C

BACKGROUND

Component of SEC61 channel-forming translocon complex that mediates transport of signal peptide-containing precursor polypeptides across the endoplasmic reticulum (ER). Forms a ribosome receptor and a gated pore in the ER membrane, both functions required for cotranslational translocation of nascent polypeptides. The SEC61 channel is also involved in ER membrane insertion of transmembrane proteins: it mediates membrane insertion of the first few transmembrane segments of proteins, while insertion of subsequent transmembrane regions of multi-pass membrane proteins is mediated by the multi-pass translocon (MPT) complex. The SEC61 channel cooperates with the translocating protein TRAM1 to import nascent proteins into the ER.

APPLICATION

To ensure optimal assay performance, AREX recommends conducting reagent titration tailored to each testing system for optimal detection results.

WB	1:500 - 1:1000
IHC	1:50 - 1:100

*Results are sample-specific. Please refer to your local assay conditions and test parameters for reference.

PRODUCT OVERVIEW

Description	Rabbit polyclonal antibody to SEC61B
Specificity	Recognizes endogenous levels of SEC61B protein.
Antibody Type	Primary antibody
Immunogen	KLH-conjugated synthetic peptide encompassing a sequence within the center region of human SEC61B. The exact sequence is proprietary.
Purification	The antibody was purified by immunogen affinity chromatography.
Molecular Weight	Predicted: 9 kD; Observed: 15 kD
Form/Buffer	Liquid in 0.42% Potassium phosphate, 0.87% Sodium chloride, pH 7.3, 30% glycerol, and 0.01% sodium azide.
Alternative Names	Protein transport protein Sec61 subunit beta
Gene Symbol	SEC61B
Entrez Gene	10952(Human); 66212(Mouse)
SwissProt	P60468(Human); Q9CQS8(Mouse)

*AREX continuously optimizes our products. Webpage content may not reflect the latest updates. For inquiries, please contact info@arexbio.com or your local distributor.

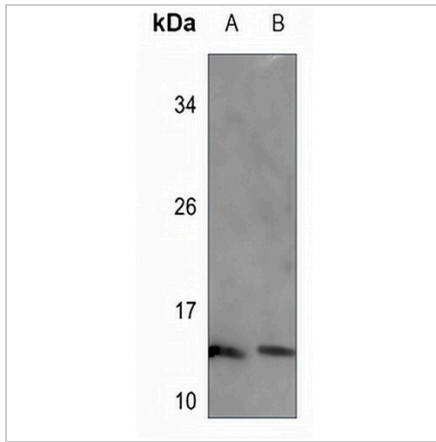
*Clone Number, Reactivity, Source/Host and Clonality can be found in the product name and Key Features section above.

DATASHEET

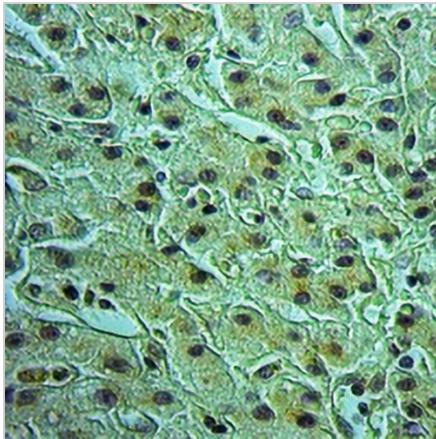
SEC61B Rabbit Polyclonal Antibody

CAT. NO. APA08454

DATA



Western blot analysis of SEC61B expression in rat kidney (A), rat liver (B) whole cell lysates. (Predicted band size: 9 kD; Observed band size: 15 kD)



Immunohistochemical analysis of SEC61B staining in human liver cancer formalin fixed paraffin embedded tissue section. The section was pre-treated using heat mediated antigen retrieval with sodium citrate buffer (pH 6.0). The section was then incubated with the antibody at room temperature and detected using an HRP conjugated compact polymer system. DAB was used as the chromogen. The section was then counterstained with haematoxylin and mounted with DPX.

STORAGE

Store at 4°C short term. For long term storage, store at -20°C, avoiding freeze/thaw cycles.

NOTE

For Research Use Only. Not for diagnostic, therapeutics, prophylactic or in vivo use.