

DATASHEET

GPR182 Rabbit Polyclonal Antibody

CAT. NO. APA08457

KEY FEATURES

Target	GPR182	Source / Host	Rabbit
Reactivity	Human, Mouse, Rat	Clonality	Polyclonal
Applications	WB, IF/ICC	Conjugation	Unconjugated
Form / Buffer	Liquid in 0.42% Potassium phosphate, 0.87% Sodium chloride, pH 7.3, 30% glycerol, and 0.01% sodium azide.		Storage at -20°C

BACKGROUND

Atypical chemokine receptor that regulates chemokine levels and localization through chemokine binding, independently of activating classical ligand-induced signaling pathways such as G-protein activation and Ca(2+) mobilization mobilization . Instead, it mediates chemokine sequestration, transport, or internalization to control their availability . Acts as a scavenger for a broad range of chemokines from CXC, CC and XC chemokine ligand families including CXCL9, CXCL10, CXCL12, CXCL13, CXCL11, CXCL14, CCL1, CCL11, CCL19, CCL25, CCL28 and XCL1 . Is the only atypical receptor for chemokines CXCL13 and CCL28 .

APPLICATION

To ensure optimal assay performance, AREX recommends conducting reagent titration tailored to each testing system for optimal detection results.

WB	1:500 - 1:1000
IF/ICC	1:50 - 1:200

*Results are sample-specific. Please refer to your local assay conditions and test parameters for reference.

PRODUCT OVERVIEW

Description	Rabbit polyclonal antibody to GPR182
Specificity	Recognizes endogenous levels of GPR182 protein.
Antibody Type	Primary antibody
Immunogen	KLH-conjugated synthetic peptide encompassing a sequence within the center region of human GPR182. The exact sequence is proprietary.
Purification	The antibody was purified by immunogen affinity chromatography.
Molecular Weight	Predicted: 45 kD; Observed: 45 kD
Form/Buffer	Liquid in 0.42% Potassium phosphate, 0.87% Sodium chloride, pH 7.3, 30% glycerol, and 0.01% sodium azide.
Alternative Names	ADMR; G-protein coupled receptor 182
Gene Symbol	GPR182
Entrez Gene	11318(Human)
SwissProt	O15218(Human); P43142(Mouse); P31392(Rat)

*AREX continuously optimizes our products. Webpage content may not reflect the latest updates. For inquiries, please contact info@arexbio.com or your local distributor.

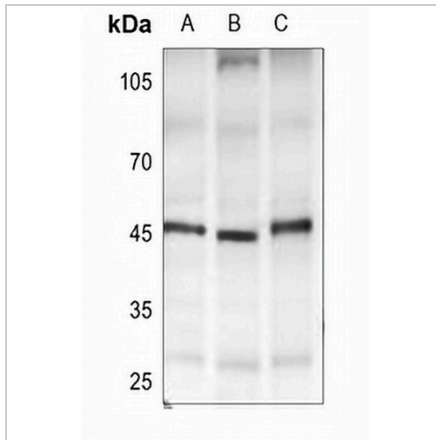
*Clone Number, Reactivity, Source/Host and Clonality can be found in the product name and Key Features section above.

DATASHEET

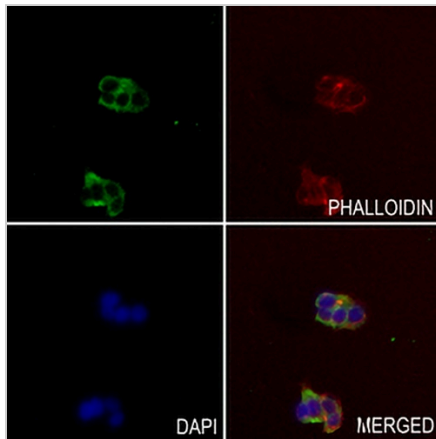
GPR182 Rabbit Polyclonal Antibody

CAT. NO. APA08457

DATA



Western blot analysis of GPR182 expression in AML12 (A), PC12 (B), Raw264.7 (C) whole cell lysates. (Predicted band size: 45 kD; Observed band size: 45 kD)



Immunofluorescent analysis of GPR182 staining in HEPG2 cells. Formalin-fixed cells were permeabilized with 0.1% Triton X-100 in TBS for 5-10 minutes and blocked with 3% BSA-PBS for 30 minutes at room temperature. Cells were probed with the primary antibody in 3% BSA-PBS and incubated overnight at 4 °C in a humidified chamber. Cells were washed with PBST and incubated with a AREX® Fluor 488 -conjugated secondary antibody (green) in PBS at room temperature in the dark. Phalloidin - AREX® Fluor 594 was used to stain Actin filaments (red). DAPI was used to stain the cell nuclei (blue).

STORAGE

Store at 4°C short term. For long term storage, store at -20°C, avoiding freeze/thaw cycles.

NOTE

For Research Use Only. Not for diagnostic, therapeutics, prophylactic or in vivo use.