

DATASHEET

BRI3 Rabbit Polyclonal Antibody

CAT. NO. APA08464

KEY FEATURES

Target	BRI3	Source / Host	Rabbit
Reactivity	Human, Mouse, Rat, Bovine	Clonality	Polyclonal
Applications	WB	Conjugation	Unconjugated
Form / Buffer	Liquid in 0.42% Potassium phosphate, 0.87% Sodium chloride, pH 7.3, 30% glycerol, and 0.01% sodium azide.		Storage at -20°C

BACKGROUND

Participates in tumor necrosis factor-alpha (TNF)-induced cell death -induced cell death . May be a target of Wnt/beta-catenin signaling in the liver .

APPLICATION

To ensure optimal assay performance, AREX recommends conducting reagent titration tailored to each testing system for optimal detection results.

WB	1:500 - 1:1000
----	----------------

*Results are sample-specific. Please refer to your local assay conditions and test parameters for reference.

PRODUCT OVERVIEW

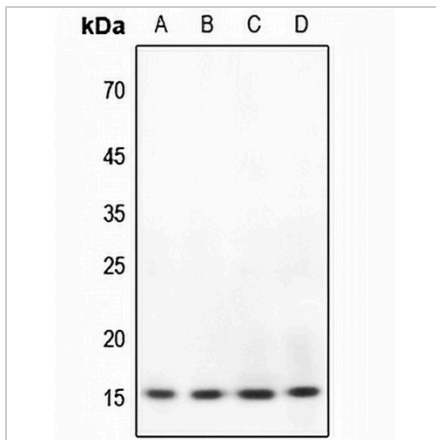
Description	Rabbit polyclonal antibody to BRI3
Specificity	Recognizes endogenous levels of BRI3 protein.
Antibody Type	Primary antibody
Immunogen	KLH-conjugated synthetic peptide encompassing a sequence within the N-term region of human BRI3. The exact sequence is proprietary.
Purification	The antibody was purified by immunogen affinity chromatography.
Molecular Weight	Predicted: 13 kD; Observed: 15 kD
Form/Buffer	Liquid in 0.42% Potassium phosphate, 0.87% Sodium chloride, pH 7.3, 30% glycerol, and 0.01% sodium azide.
Alternative Names	Brain protein I3; pRGR2
Gene Symbol	BRI3
Entrez Gene	25798(Human); 55950(Mouse); 304284(Rat)
SwissProt	O95415(Human); P28662(Mouse); Q5PPK1(Rat)

*AREX continuously optimizes our products. Webpage content may not reflect the latest updates. For inquiries, please contact info@arexbio.com or your local distributor.

*Clone Number, Reactivity, Source/Host and Clonality can be found in the product name and Key Features section above.

DATASHEET**BRI3 Rabbit Polyclonal Antibody**

CAT. NO. APA08464

DATA

Western blot analysis of BRI3 expression in HEK293T (A), HeLa (B), H446 (C), rat kidney (D) whole cell lysates. (Predicted band size: 13 kD; Observed band size: 15 kD)

STORAGE

Store at 4°C short term. For long term storage, store at -20°C, avoiding freeze/thaw cycles.

NOTE

For Research Use Only. Not for diagnostic, therapeutics, prophylactic or in vivo use.