

DATASHEET

POLR3K Rabbit Polyclonal Antibody

CAT. NO. APA08473

KEY FEATURES

Target	POLR3K	Source / Host	Rabbit
Reactivity	Human, Mouse	Clonality	Polyclonal
Applications	WB	Conjugation	Unconjugated
Form / Buffer	Liquid in 0.42% Potassium phosphate, 0.87% Sodium chloride, pH 7.3, 30% glycerol, and 0.01% sodium azide.		Storage at -20°C

BACKGROUND

Core component of RNA polymerase III (Pol III) which synthesizes small non-coding RNAs using the four ribonucleoside triphosphates as substrates which synthesizes small non-coding RNAs using the four ribonucleoside triphosphates as substrates. Can mediate Pol I proofreading of the nascent RNA transcript. Anchors into the Pol III active site to constantly monitor transcription fidelity, cleaves mis-incorporated 5'-ribonucleotides and restarts the transcription process. Once Pol III reaches the poly(dT) termination signal, can induce Pol III clamp opening and transcription termination. Pol III plays an important role in sensing and limiting infection by intracellular bacteria and DNA viruses. Acts as a nuclear and cytosolic DNA sensor involved in innate immune response.

APPLICATION

To ensure optimal assay performance, AREX recommends conducting reagent titration tailored to each testing system for optimal detection results.

WB	1:500 - 1:1000
----	----------------

*Results are sample-specific. Please refer to your local assay conditions and test parameters for reference.

PRODUCT OVERVIEW

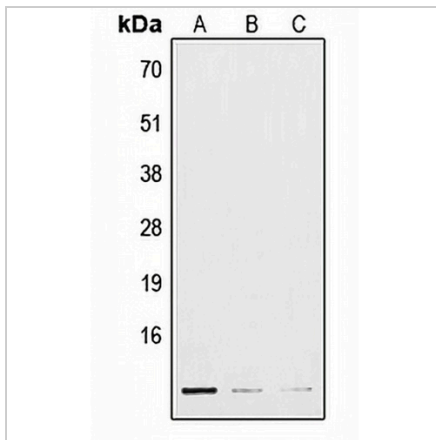
Description	Rabbit polyclonal antibody to POLR3K
Specificity	Recognizes endogenous levels of POLR3K protein.
Antibody Type	Primary antibody
Immunogen	KLH-conjugated synthetic peptide encompassing a sequence within the center region of human POLR3K. The exact sequence is proprietary.
Purification	The antibody was purified by immunogen affinity chromatography.
Molecular Weight	Predicted: 12 kD; Observed: 12 kD
Form/Buffer	Liquid in 0.42% Potassium phosphate, 0.87% Sodium chloride, pH 7.3, 30% glycerol, and 0.01% sodium azide.
Alternative Names	RPC11; DNA-directed RNA polymerase III subunit RPC10; RNA polymerase III subunit C10; DNA-directed RNA polymerase III subunit K; RNA polymerase III 12.5 kDa subunit; RPC12.5; RNA polymerase III subunit C11; HsC11p; RPC11; hRPC11
Gene Symbol	POLR3K
Entrez Gene	51728(Human); 67005(Mouse)
SwissProt	Q9Y2Y1(Human); Q9CQZ7(Mouse)

*AREX continuously optimizes our products. Webpage content may not reflect the latest updates. For inquiries, please contact info@arexbio.com or your local distributor.

*Clone Number, Reactivity, Source/Host and Clonality can be found in the product name and Key Features section above.

DATASHEET**POLR3K Rabbit Polyclonal Antibody**

CAT. NO. APA08473

DATA

Western blot analysis of POLR3K expression in HepG2 (A), mouse lung (B), H9C2 (C) whole cell lysates. (Predicted band size: 12 kD; Observed band size: 12 kD)

STORAGE

Store at 4°C short term. For long term storage, store at -20°C, avoiding freeze/thaw cycles.

NOTE

For Research Use Only. Not for diagnostic, therapeutics, prophylactic or in vivo use.