

**DATASHEET**

**RAB39A Rabbit Polyclonal Antibody**

CAT. NO. APA08475

**KEY FEATURES**

Target	RAB39A	Source / Host	Rabbit
Reactivity	Human, Rat	Clonality	Polyclonal
Applications	WB	Conjugation	Unconjugated
Form / Buffer	Liquid in 0.42% Potassium phosphate, 0.87% Sodium chloride, pH 7.3, 30% glycerol, and 0.01% sodium azide.		Storage at -20°C

**BACKGROUND**

The small GTPases Rab are key regulators of intracellular membrane trafficking, from the formation of transport vesicles to their fusion with membranes. Rabs cycle between an inactive GDP-bound form and an active GTP-bound form that is able to recruit to membranes different sets of downstream effectors directly responsible for vesicle formation, movement, tethering and fusion. RAB39A regulates autophagosome-lysosome fusion via recruitment of the HOPS endosomal tethering complex onto lysosomes; this process involves lysosomal RAB39A and autophagosomal RAB2A recruitment of HOPS subcomplexes VPS41-VPS16-VPS18-VPS33A and VPS39-VPS11, respectively, which assemble into a functional complex to mediate membrane tethering and SNAREs-driven membrane fusion.

**APPLICATION**

To ensure optimal assay performance, AREX recommends conducting reagent titration tailored to each testing system for optimal detection results.

WB	1:500 - 1:1000
----	----------------

\*Results are sample-specific. Please refer to your local assay conditions and test parameters for reference.

**PRODUCT OVERVIEW**

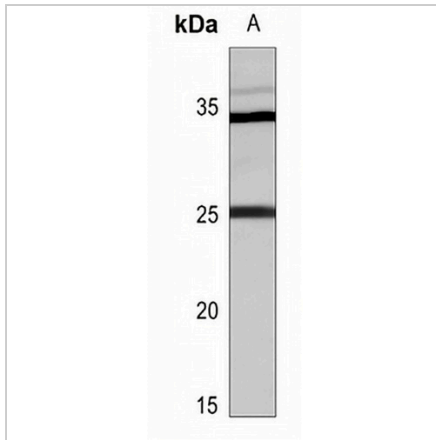
Description	Rabbit polyclonal antibody to RAB39A
Specificity	Recognizes endogenous levels of RAB39A protein.
Antibody Type	Primary antibody
Immunogen	KLH-conjugated synthetic peptide encompassing a sequence within the center region of human RAB39A. The exact sequence is proprietary.
Purification	The antibody was purified by immunogen affinity chromatography.
Molecular Weight	Predicted: 25 kD; Observed: 25 kD
Form/Buffer	Liquid in 0.42% Potassium phosphate, 0.87% Sodium chloride, pH 7.3, 30% glycerol, and 0.01% sodium azide.
Alternative Names	RAB39; Ras-related protein Rab-39A; Rab-39
Gene Symbol	RAB39A
Entrez Gene	54734(Human)
SwissProt	Q14964(Human)

\*AREX continuously optimizes our products. Webpage content may not reflect the latest updates. For inquiries, please contact [info@arexbio.com](mailto:info@arexbio.com) or your local distributor.

\*Clone Number, Reactivity, Source/Host and Clonality can be found in the product name and Key Features section above.

**DATASHEET****RAB39A Rabbit Polyclonal Antibody**

CAT. NO. APA08475

**DATA**

Western blot analysis of RAB39A expression in PC12 (A) whole cell lysates. (Predicted band size: 25 kD; Observed band size: 25 kD)

**STORAGE**

Store at 4°C short term. For long term storage, store at -20°C, avoiding freeze/thaw cycles.

**NOTE**

For Research Use Only. Not for diagnostic, therapeutics, prophylactic or in vivo use.