

**DATASHEET**

**CFC1B Rabbit Polyclonal Antibody**

CAT. NO. APA08481

**KEY FEATURES**

Target	CFC1B	Source / Host	Rabbit
Reactivity	Human, Mouse, Rat	Clonality	Polyclonal
Applications	WB	Conjugation	Unconjugated
Form / Buffer	Liquid in 0.42% Potassium phosphate, 0.87% Sodium chloride, pH 7.3, 30% glycerol, and 0.01% sodium azide.		Storage at -20°C

**BACKGROUND**

Cryptic family protein 1B (CFC1B). Belongs to the EGF-CFC (Cripto-1/FRL1/Cryptic) family Subcellular location: Secreted

**APPLICATION**

To ensure optimal assay performance, AREX recommends conducting reagent titration tailored to each testing system for optimal detection results.

WB	1:500 - 1:1000
----	----------------

\*Results are sample-specific. Please refer to your local assay conditions and test parameters for reference.

**PRODUCT OVERVIEW**

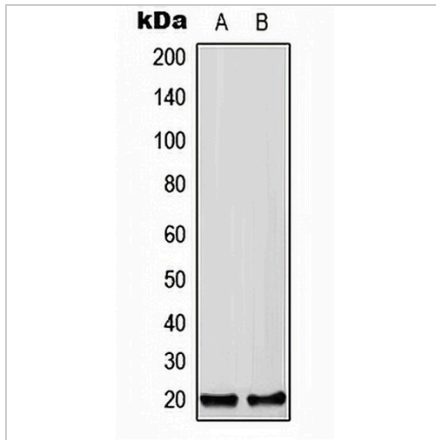
Description	Rabbit polyclonal antibody to CFC1B
Specificity	Recognizes endogenous levels of CFC1B protein.
Antibody Type	Primary antibody
Immunogen	KLH-conjugated synthetic peptide encompassing a sequence within the C-term region of human CFC1B. The exact sequence is proprietary.
Purification	The antibody was purified by immunogen affinity chromatography.
Molecular Weight	Predicted: 24 kD; Observed: 20 kD
Form/Buffer	Liquid in 0.42% Potassium phosphate, 0.87% Sodium chloride, pH 7.3, 30% glycerol, and 0.01% sodium azide.
Alternative Names	CFC1B; Cryptic family protein 1B; CFC1; Cryptic protein; Cryptic family protein 1
Gene Symbol	CFC1B; CFC1
Entrez Gene	55997(Human)
SwissProt	P0CG36; P0CG37(Human)

\*AREX continuously optimizes our products. Webpage content may not reflect the latest updates. For inquiries, please contact [info@arexbio.com](mailto:info@arexbio.com) or your local distributor.

\*Clone Number, Reactivity, Source/Host and Clonality can be found in the product name and Key Features section above.

**DATASHEET****CFC1B Rabbit Polyclonal Antibody**

CAT. NO. APA08481

**DATA**

Western blot analysis of CFC1B expression in HEK293T (A), Raw264.7 (B), H9C2 (C) whole cell lysates. (Predicted band size: 24 kD; Observed band size: 20 kD)

**STORAGE**

Store at 4°C short term. For long term storage, store at -20°C, avoiding freeze/thaw cycles.

**NOTE**

For Research Use Only. Not for diagnostic, therapeutics, prophylactic or in vivo use.