

DATASHEET

MKL2 Rabbit Polyclonal Antibody

CAT. NO. APA08484

KEY FEATURES

Target	MKL2	Source / Host	Rabbit
Reactivity	Human, Mouse	Clonality	Polyclonal
Applications	WB	Conjugation	Unconjugated
Form / Buffer	Liquid in 0.42% Potassium phosphate, 0.87% Sodium chloride, pH 7.3, 30% glycerol, and 0.01% sodium azide.		Storage at -20°C

BACKGROUND

Acts as a transcriptional coactivator of serum response factor (SRF). Required for skeletal myogenic differentiation.

APPLICATION

To ensure optimal assay performance, AREX recommends conducting reagent titration tailored to each testing system for optimal detection results.

WB	1:500 - 1:1000
----	----------------

*Results are sample-specific. Please refer to your local assay conditions and test parameters for reference.

PRODUCT OVERVIEW

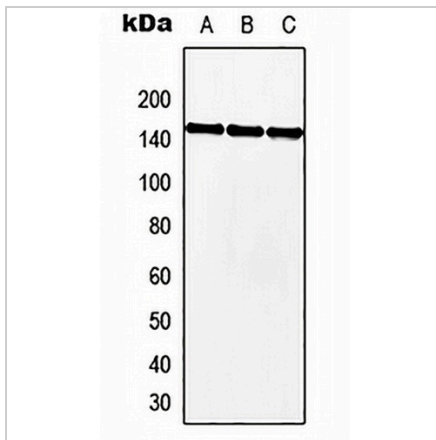
Description	Rabbit polyclonal antibody to MKL2
Specificity	Recognizes endogenous levels of MKL2 protein.
Antibody Type	Primary antibody
Immunogen	KLH-conjugated synthetic peptide encompassing a sequence within the center region of human MKL2. The exact sequence is proprietary.
Purification	The antibody was purified by immunogen affinity chromatography.
Molecular Weight	Predicted: 42; Observed: 145 kD
Form/Buffer	Liquid in 0.42% Potassium phosphate, 0.87% Sodium chloride, pH 7.3, 30% glycerol, and 0.01% sodium azide.
Alternative Names	KIAA1243; MRTFB; MKL/myocardin-like protein 2; Megakaryoblastic leukemia 2; Myocardin-related transcription factor B; MRTF-B
Gene Symbol	MKL2
Entrez Gene	57496(Human); 239719(Mouse)
SwissProt	Q9ULH7(Human); P59759(Mouse)

*AREX continuously optimizes our products. Webpage content may not reflect the latest updates. For inquiries, please contact info@arexbio.com or your local distributor.

*Clone Number, Reactivity, Source/Host and Clonality can be found in the product name and Key Features section above.

DATASHEET**MKL2 Rabbit Polyclonal Antibody**

CAT. NO. APA08484

DATA

Western blot analysis of MKL2 expression in HEK293T (A), NIH3T3 (B), H9C2 (C) whole cell lysates. (Predicted band size: 42; 51; 114; 118; 119 kD; Observed band size: 145 kD)

STORAGE

Store at 4°C short term. For long term storage, store at -20°C, avoiding freeze/thaw cycles.

NOTE

For Research Use Only. Not for diagnostic, therapeutics, prophylactic or in vivo use.