

DATASHEET

RAPH1 Rabbit Polyclonal Antibody

CAT. NO. APA08488

KEY FEATURES

Target	RAPH1	Source / Host	Rabbit
Reactivity	Human, Mouse, Rat	Clonality	Polyclonal
Applications	WB, IF/ICC	Conjugation	Unconjugated
Form / Buffer	Liquid in 0.42% Potassium phosphate, 0.87% Sodium chloride, pH 7.3, 30% glycerol, and 0.01% sodium azide.		Storage at-20°C

BACKGROUND

Mediator of localized membrane signals. Implicated in the regulation of lamellipodial dynamics. Negatively regulates cell adhesion.

APPLICATION

To ensure optimal assay performance, AREX recommends conducting reagent titration tailored to each testing system for optimal detection results.

WB	1:500 - 1:1000
IF/ICC	1:50 - 1:200

*Results are sample-specific. Please refer to your local assay conditions and test parameters for reference.

PRODUCT OVERVIEW

Description	Rabbit polyclonal antibody to RAPH1
Specificity	Recognizes endogenous levels of RAPH1 protein.
Antibody Type	Primary antibody
Immunogen	KLH-conjugated synthetic peptide encompassing a sequence within the center region of human RAPH1. The exact sequence is proprietary.
Purification	The antibody was purified by immunogen affinity chromatography.
Molecular Weight	Predicted: 135 kD; Observed: 135 kD
Form/Buffer	Liquid in 0.42% Potassium phosphate, 0.87% Sodium chloride, pH 7.3, 30% glycerol, and 0.01% sodium azide.
Alternative Names	ALS2CR18; ALS2CR9; KIAA1681; LPD; PREL2; RMO1; Ras-associated and pleckstrin homology domains-containing protein 1; RAPH1; Amyotrophic lateral sclerosis 2 chromosomal region candidate gene 18 protein; Amyotrophic lateral sclerosis 2 chromosomal region candidate gene 9 protein; Lamellipodin; Proline-rich EVH1 ligand 2; PREL-2; Protein RMO1
Gene Symbol	RAPH1
Entrez Gene	65059(Human)
SwissProt	Q70E73(Human)

*AREX continuously optimizes our products. Webpage content may not reflect the latest updates. For inquiries, please contact info@arexbio.com or your local distributor.

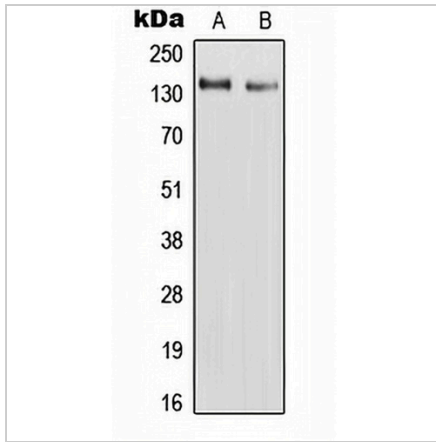
*Clone Number, Reactivity, Source/Host and Clonality can be found in the product name and Key Features section above.

DATASHEET

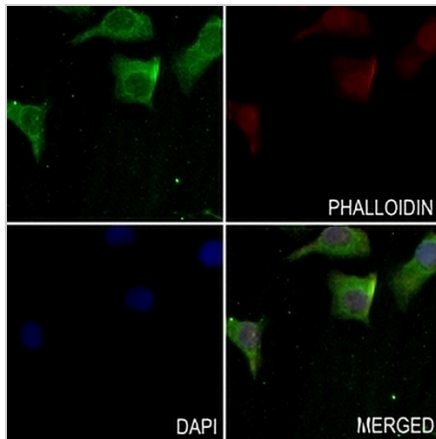
RAPH1 Rabbit Polyclonal Antibody

CAT. NO. APA08488

DATA



Western blot analysis of RAPH1 expression in HepG2 (A), H9C2 (B) whole cell lysates. (Predicted band size: 135 kD; Observed band size: 135 kD)



Immunofluorescent analysis of RAPH1 staining in A549 cells. Formalin-fixed cells were permeabilized with 0.1% Triton X-100 in TBS for 5-10 minutes and blocked with 3% BSA-PBS for 30 minutes at room temperature. Cells were probed with the primary antibody in 3% BSA-PBS and incubated overnight at 4 °C in a humidified chamber. Cells were washed with PBST and incubated with a AREX® Fluor 488 -conjugated secondary antibody (green) in PBS at room temperature in the dark. Phalloidin - AREX® Fluor 594 was used to stain Actin filaments (red). DAPI was used to stain the cell nuclei (blue).

STORAGE

Store at 4°C short term. For long term storage, store at -20°C, avoiding freeze/thaw cycles.

NOTE

For Research Use Only. Not for diagnostic, therapeutics, prophylactic or in vivo use.