

DATASHEET

TMC7 Rabbit Polyclonal Antibody

CAT. NO. APA08490

KEY FEATURES

Target	TMC7	Source / Host	Rabbit
Reactivity	Human, Mouse, Rat, Dog, Monkey, Pig, Rabbit	Clonality	Polyclonal
Applications	WB	Conjugation	Unconjugated
Form / Buffer	Liquid in 0.42% Potassium phosphate, 0.87% Sodium chloride, pH 7.3, 30% glycerol, and 0.01% sodium azide.		Storage at -20°C

BACKGROUND

Acts as an inhibitory modulator of PIEZO2 mechanosensitive channel in dorsal root ganglion (DRG) neurons through physical interactions or interference with the interaction between PIEZO2 and the cytoskeleton.

APPLICATION

To ensure optimal assay performance, AREX recommends conducting reagent titration tailored to each testing system for optimal detection results.

WB	1:500 - 1:1000
----	----------------

*Results are sample-specific. Please refer to your local assay conditions and test parameters for reference.

PRODUCT OVERVIEW

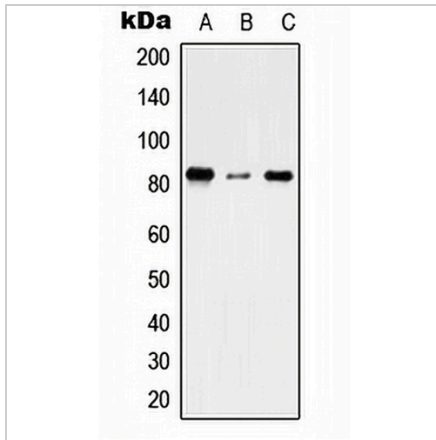
Description	Rabbit polyclonal antibody to TMC7
Specificity	Recognizes endogenous levels of TMC7 protein.
Antibody Type	Primary antibody
Immunogen	KLH-conjugated synthetic peptide encompassing a sequence within the C-term region of human TMC7. The exact sequence is proprietary.
Purification	The antibody was purified by immunogen affinity chromatography.
Molecular Weight	Predicted: 83 kD; Observed: 80 kD
Form/Buffer	Liquid in 0.42% Potassium phosphate, 0.87% Sodium chloride, pH 7.3, 30% glycerol, and 0.01% sodium azide.
Alternative Names	Transmembrane channel-like protein 7
Gene Symbol	TMC7
Entrez Gene	79905(Human); 209760(Mouse)
SwissProt	Q7Z402(Human); Q8C428(Mouse)

*AREX continuously optimizes our products. Webpage content may not reflect the latest updates. For inquiries, please contact info@arexbio.com or your local distributor.

*Clone Number, Reactivity, Source/Host and Clonality can be found in the product name and Key Features section above.

DATASHEET**TMC7 Rabbit Polyclonal Antibody**

CAT. NO. APA08490

DATA

Western blot analysis of TMC7 expression in THP1 (A), NIH3T3 (B), H9C2 (C) whole cell lysates. (Predicted band size: 83 kD; Observed band size: 80 kD)

STORAGE

Store at 4°C short term. For long term storage, store at -20°C, avoiding freeze/thaw cycles.

NOTE

For Research Use Only. Not for diagnostic, therapeutics, prophylactic or in vivo use.