

DATASHEET

MCM8 Rabbit Polyclonal Antibody

CAT. NO. APA08494

KEY FEATURES

Target	MCM8	Source / Host	Rabbit
Reactivity	Human, Rat	Clonality	Polyclonal
Applications	WB	Conjugation	Unconjugated
Form / Buffer	Liquid in 0.42% Potassium phosphate, 0.87% Sodium chloride, pH 7.3, 30% glycerol, and 0.01% sodium azide.		Storage at -20°C

BACKGROUND

Component of the MCM8-MCM9 complex, which is involved in the repair of double-stranded DNA breaks (DBSs) and DNA interstrand cross-links (ICLs) by homologous recombination (HR) and DNA interstrand cross-links (ICLs) by homologous recombination (HR). The MCM8-MCM9 complex is a 3'-5' DNA helicase and single-stranded (ss)DNA-stimulated ATPase which binds ssDNA in the presence of nucleoside triphosphates. Required for DNA resection by the MRE11-RAD50-NBN/NBS1 (MRN) complex by recruiting the MRN complex to the repair site and by promoting the complex nuclease activity. Indirectly regulates the recruitment of downstream effector RAD51 to DNA damage sites including DBSs and ICLs, probably by regulating the localization of the MNR complex.

APPLICATION

To ensure optimal assay performance, AREX recommends conducting reagent titration tailored to each testing system for optimal detection results.

WB	1:500 - 1:1000
----	----------------

*Results are sample-specific. Please refer to your local assay conditions and test parameters for reference.

PRODUCT OVERVIEW

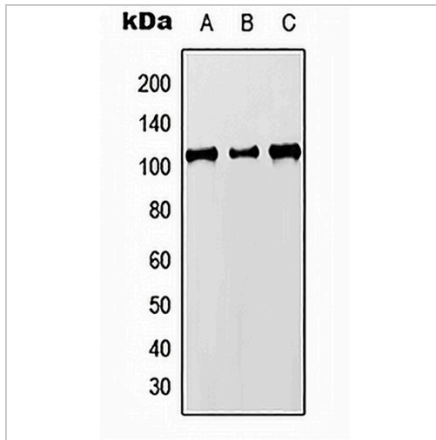
Description	Rabbit polyclonal antibody to MCM8
Specificity	Recognizes endogenous levels of MCM8 protein.
Antibody Type	Primary antibody
Immunogen	KLH-conjugated synthetic peptide encompassing a sequence within the C-term region of human MCM8. The exact sequence is proprietary.
Purification	The antibody was purified by immunogen affinity chromatography.
Molecular Weight	Predicted: 88; Observed: 110 kD
Form/Buffer	Liquid in 0.42% Potassium phosphate, 0.87% Sodium chloride, pH 7.3, 30% glycerol, and 0.01% sodium azide.
Alternative Names	C20orf154; DNA helicase MCM8; Minichromosome maintenance 8
Gene Symbol	MCM8
Entrez Gene	84515(Human); 296178(Rat)
SwissProt	Q9UJA3(Human); D3ZVK1(Rat)

*AREX continuously optimizes our products. Webpage content may not reflect the latest updates. For inquiries, please contact info@arexbio.com or your local distributor.

*Clone Number, Reactivity, Source/Host and Clonality can be found in the product name and Key Features section above.

DATASHEET**MCM8 Rabbit Polyclonal Antibody**

CAT. NO. APA08494

DATA

Western blot analysis of MCM8 expression in HEK293T (A), Raw264.7 (B), H9C2 (C) whole cell lysates. (Predicted band size: 88; 91; 93; 97 kD; Observed band size: 110 kD)

STORAGE

Store at 4°C short term. For long term storage, store at -20°C, avoiding freeze/thaw cycles.

NOTE

For Research Use Only. Not for diagnostic, therapeutics, prophylactic or in vivo use.