

DATASHEET

Collagen 26 alpha 1 Rabbit Polyclonal Antibody

CAT. NO. APA08503

KEY FEATURES

Target	Collagen 26 alpha 1	Source / Host	Rabbit
Reactivity	Human, Mouse, Rat	Clonality	Polyclonal
Applications	WB	Conjugation	Unconjugated
Form / Buffer	Liquid in 0.42% Potassium phosphate, 0.87% Sodium chloride, pH 7.3, 30% glycerol, and 0.01% sodium azide.		Storage at -20°C

BACKGROUND

This gene encodes a protein containing an emilin domain and two collagen stretches. This gene may be associated with aspirin-intolerant asthma. Alternatively spliced transcript variants encoding different isoforms have been found for this gene.

APPLICATION

To ensure optimal assay performance, AREX recommends conducting reagent titration tailored to each testing system for optimal detection results.

WB	1:500 - 1:1000
----	----------------

*Results are sample-specific. Please refer to your local assay conditions and test parameters for reference.

PRODUCT OVERVIEW

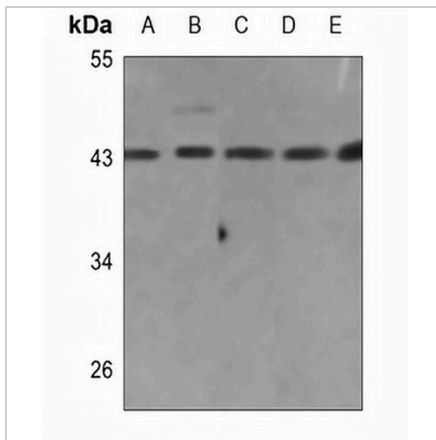
Description	Rabbit polyclonal antibody to Collagen 26 alpha 1
Specificity	Recognizes endogenous levels of Collagen 26 alpha 1 protein.
Antibody Type	Primary antibody
Immunogen	KLH-conjugated synthetic peptide encompassing a sequence within the center region of human Collagen 26 alpha 1. The exact sequence is proprietary.
Purification	The antibody was purified by immunogen affinity chromatography.
Molecular Weight	Predicted: 45 kD; Observed: 43 kD
Form/Buffer	Liquid in 0.42% Potassium phosphate, 0.87% Sodium chloride, pH 7.3, 30% glycerol, and 0.01% sodium azide.
Alternative Names	EMID2; EMU2; Collagen alpha-1(XXVI) chain; Alpha-1 type XXVI collagen; EMI domain-containing protein 2; Emilin and multimerin domain-containing protein 2; Emu2
Gene Symbol	EMID2
Entrez Gene	136227(Human); 140709(Mouse)
SwissProt	Q96A83(Human); Q91VF6(Mouse)

*AREX continuously optimizes our products. Webpage content may not reflect the latest updates. For inquiries, please contact info@arexbio.com or your local distributor.

*Clone Number, Reactivity, Source/Host and Clonality can be found in the product name and Key Features section above.

DATASHEET**Collagen 26 alpha 1 Rabbit Polyclonal Antibody**

CAT. NO. APA08503

DATA

Western blot analysis of Collagen 26 alpha 1 expression in HEK293T (A), A549 (B), mouse kidney (C), rat kidney (D), rat liver (E) whole cell lysates. (Predicted band size: 45 kD; Observed band size: 43 kD)

STORAGE

Store at 4°C short term. For long term storage, store at -20°C, avoiding freeze/thaw cycles.

NOTE

For Research Use Only. Not for diagnostic, therapeutics, prophylactic or in vivo use.