

DATASHEET

RGMB Rabbit Polyclonal Antibody

CAT. NO. APA08506

KEY FEATURES

Target	RGMB	Source / Host	Rabbit
Reactivity	Human, Mouse, Rat, Monkey	Clonality	Polyclonal
Applications	WB	Conjugation	Unconjugated
Form / Buffer	Liquid in 0.42% Potassium phosphate, 0.87% Sodium chloride, pH 7.3, 30% glycerol, and 0.01% sodium azide.		Storage at -20°C

BACKGROUND

Member of the repulsive guidance molecule (RGM) family that contributes to the patterning of the developing nervous system . Acts as a bone morphogenetic protein (BMP) coreceptor that potentiates BMP signaling . Promotes neuronal adhesion . May inhibit neurite outgrowth.

APPLICATION

To ensure optimal assay performance, AREX recommends conducting reagent titration tailored to each testing system for optimal detection results.

WB	1:500 - 1:1000
----	----------------

*Results are sample-specific. Please refer to your local assay conditions and test parameters for reference.

PRODUCT OVERVIEW

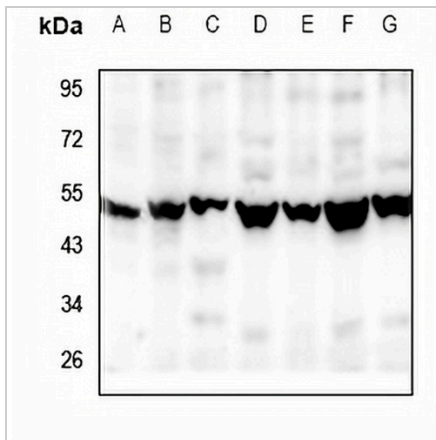
Description	Rabbit polyclonal antibody to RGMB
Specificity	Recognizes endogenous levels of RGMB protein.
Antibody Type	Primary antibody
Immunogen	KLH-conjugated synthetic peptide encompassing a sequence within the center region of human RGMB. The exact sequence is proprietary.
Purification	The antibody was purified by immunogen affinity chromatography.
Molecular Weight	Predicted: 47 kD; Observed: 52 kD
Form/Buffer	Liquid in 0.42% Potassium phosphate, 0.87% Sodium chloride, pH 7.3, 30% glycerol, and 0.01% sodium azide.
Alternative Names	RGM domain family member B; DRG11-responsive axonal guidance and outgrowth of neurite; DRAGON
Gene Symbol	RGMB
Entrez Gene	285704(Human); 68799(Mouse)
SwissProt	Q6NW40(Human); Q7TQ33(Mouse)

*AREX continuously optimizes our products. Webpage content may not reflect the latest updates. For inquiries, please contact info@arexbio.com or your local distributor.

*Clone Number, Reactivity, Source/Host and Clonality can be found in the product name and Key Features section above.

DATASHEET**RGMB Rabbit Polyclonal Antibody**

CAT. NO. APA08506

DATA

Western blot analysis of RGMB expression in mouse brain (A), rat brain (B), HeLa (C), HCT116 (D), A2780 (E), PC3 (F), SGC7901 (G) whole cell lysates. (Predicted band size: 47 kD; Observed band size: 52 kD)

STORAGE

Store at 4°C short term. For long term storage, store at -20°C, avoiding freeze/thaw cycles.

NOTE

For Research Use Only. Not for diagnostic, therapeutics, prophylactic or in vivo use.