

DATASHEET

WIT1 Rabbit Polyclonal Antibody

CAT. NO. APA08513

KEY FEATURES

Target	WIT1	Source / Host	Rabbit
Reactivity	Human, Mouse, Rat	Clonality	Polyclonal
Applications	WB	Conjugation	Unconjugated
Form / Buffer	Liquid in 0.42% Potassium phosphate, 0.87% Sodium chloride, pH 7.3, 30% glycerol, and 0.01% sodium azide.		Storage at-20°C

BACKGROUND

This gene is located upstream of the Wilms tumor 1 (WT1) gene; these two genes are bi-directionally transcribed from the same promoter region. This gene is imprinted in kidney, with preferential expression from the paternal allele. Imprinting defects at chromosome 11p13 may contribute to tumorigenesis.

APPLICATION

To ensure optimal assay performance, AREX recommends conducting reagent titration tailored to each testing system for optimal detection results.

WB	1:500 - 1:1000
----	----------------

*Results are sample-specific. Please refer to your local assay conditions and test parameters for reference.

PRODUCT OVERVIEW

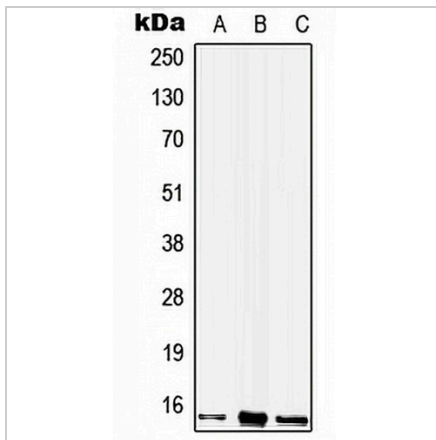
Description	Rabbit polyclonal antibody to WIT1
Specificity	Recognizes endogenous levels of WIT1 protein.
Antibody Type	Primary antibody
Immunogen	KLH-conjugated synthetic peptide encompassing a sequence within the center region of human WIT1. The exact sequence is proprietary.
Purification	The antibody was purified by immunogen affinity chromatography.
Molecular Weight	Predicted: 10 kD; Observed: 10 kD
Form/Buffer	Liquid in 0.42% Potassium phosphate, 0.87% Sodium chloride, pH 7.3, 30% glycerol, and 0.01% sodium azide.
Alternative Names	WIT1; Putative Wilms tumor upstream neighbor 1 gene protein; WIT-1; Wilms tumor-associated antisense RNA
Gene Symbol	WT1-AS
Entrez Gene	51352(Human)
SwissProt	Q06250(Human)

*AREX continuously optimizes our products. Webpage content may not reflect the latest updates. For inquiries, please contact info@arexbio.com or your local distributor.

*Clone Number, Reactivity, Source/Host and Clonality can be found in the product name and Key Features section above.

DATASHEET**WIT1 Rabbit Polyclonal Antibody**

CAT. NO. APA08513

DATA

Western blot analysis of WIT1 expression in A549 (A), Raw264.7 (B), H9C2 (C) whole cell lysates. (Predicted band size: 10 kD; Observed band size: 10 kD)

STORAGE

Store at 4°C short term. For long term storage, store at -20°C, avoiding freeze/thaw cycles.

NOTE

For Research Use Only. Not for diagnostic, therapeutics, prophylactic or in vivo use.