

DATASHEET

FKSG2 Rabbit Polyclonal Antibody

CAT. NO. APA08514

KEY FEATURES

Target	FKSG2	Source / Host	Rabbit
Reactivity	Human, Mouse, Rat	Clonality	Polyclonal
Applications	WB	Conjugation	Unconjugated
Form / Buffer	Liquid in 0.42% Potassium phosphate, 0.87% Sodium chloride, pH 7.3, 30% glycerol, and 0.01% sodium azide.	Storage	at-20°C

BACKGROUND

Putative translationally-controlled tumor protein-like protein TPT1P8 (TPT1P8), also known as Putative apoptosis inhibitor FKSG2. Belongs to the TCTP family

APPLICATION

To ensure optimal assay performance, AREX recommends conducting reagent titration tailored to each testing system for optimal detection results.

WB	1:500 - 1:1000
----	----------------

*Results are sample-specific. Please refer to your local assay conditions and test parameters for reference.

PRODUCT OVERVIEW

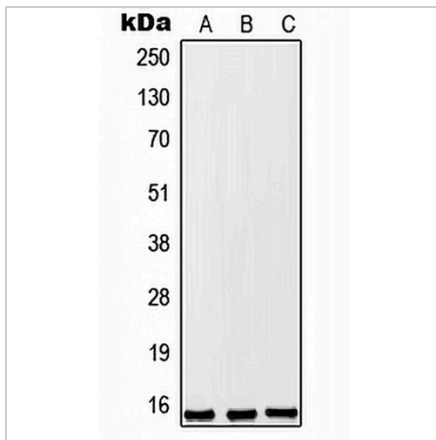
Description	Rabbit polyclonal antibody to FKSG2
Specificity	Recognizes endogenous levels of FKSG2 protein.
Antibody Type	Primary antibody
Immunogen	KLH-conjugated synthetic peptide encompassing a sequence within the center region of human FKSG2. The exact sequence is proprietary.
Purification	The antibody was purified by immunogen affinity chromatography.
Molecular Weight	Predicted: 15 kD; Observed: 15 kD
Form/Buffer	Liquid in 0.42% Potassium phosphate, 0.87% Sodium chloride, pH 7.3, 30% glycerol, and 0.01% sodium azide.
Alternative Names	Putative translationally-controlled tumor protein-like protein TPT1P8; Putative apoptosis inhibitor FKSG2
Gene Symbol	FKSG2
Entrez Gene	59347(Human)
SwissProt	Q9HAU6(Human)

*AREX continuously optimizes our products. Webpage content may not reflect the latest updates. For inquiries, please contact info@arexbio.com or your local distributor.

*Clone Number, Reactivity, Source/Host and Clonality can be found in the product name and Key Features section above.

DATASHEET**FKSG2 Rabbit Polyclonal Antibody**

CAT. NO. APA08514

DATA

Western blot analysis of FKSG2 expression in A549 (A), Raw264.7 (B), PC12 (C) whole cell lysates. (Predicted band size: 15 kD; Observed band size: 15 kD)

STORAGE

Store at 4°C short term. For long term storage, store at -20°C, avoiding freeze/thaw cycles.

NOTE

For Research Use Only. Not for diagnostic, therapeutics, prophylactic or in vivo use.