

DATASHEET

Adenosine A1 Receptor Rabbit Polyclonal Antibody

CAT. NO. APA08521

KEY FEATURES

Target	Adenosine A1 Receptor	Source / Host	Rabbit
Reactivity	Human, Mouse, Rat, Monkey	Clonality	Polyclonal
Applications	WB	Conjugation	Unconjugated
Form / Buffer	Liquid in 0.42% Potassium phosphate, 0.87% Sodium chloride, pH 7.3, 30% glycerol, and 0.01% sodium azide.		Storage at -20°C

BACKGROUND

Receptor for adenosine . The activity of this receptor is mediated by G proteins such as GNAI2 which inhibit adenylyl cyclase.

APPLICATION

To ensure optimal assay performance, AREX recommends conducting reagent titration tailored to each testing system for optimal detection results.

WB	1:500 - 1:1000
----	----------------

*Results are sample-specific. Please refer to your local assay conditions and test parameters for reference.

PRODUCT OVERVIEW

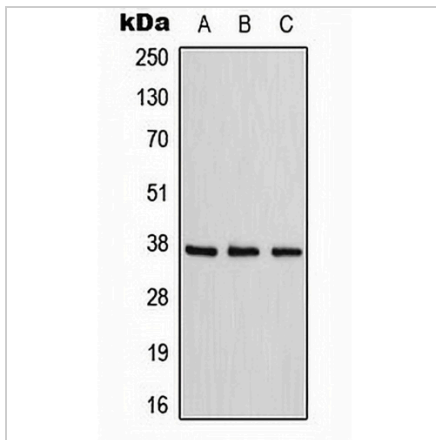
Description	Rabbit polyclonal antibody to Adenosine A1 Receptor
Specificity	Recognizes endogenous levels of Adenosine A1 Receptor protein.
Antibody Type	Primary antibody
Immunogen	KLH-conjugated synthetic peptide encompassing a sequence within the C-term region of human Adenosine A1 Receptor. The exact sequence is proprietary.
Purification	The antibody was purified by immunogen affinity chromatography.
Molecular Weight	Predicted: 13; Observed: 37 kD
Form/Buffer	Liquid in 0.42% Potassium phosphate, 0.87% Sodium chloride, pH 7.3, 30% glycerol, and 0.01% sodium azide.
Alternative Names	Adenosine receptor A1
Gene Symbol	ADORA1
Entrez Gene	134(Human); 11539(Mouse); 29290(Rat)
SwissProt	P30542(Human); Q60612(Mouse); P25099(Rat)

*AREX continuously optimizes our products. Webpage content may not reflect the latest updates. For inquiries, please contact info@arexbio.com or your local distributor.

*Clone Number, Reactivity, Source/Host and Clonality can be found in the product name and Key Features section above.

DATASHEET**Adenosine A1 Receptor Rabbit Polyclonal Antibody**

CAT. NO. APA08521

DATA

Western blot analysis of Adenosine A1 Receptor expression in HepG2 (A), NIH3T3 (B), rat kidney (C) whole cell lysates. (Predicted band size: 13; 36 kD; Observed band size: 37 kD)

STORAGE

Store at 4°C short term. For long term storage, store at -20°C, avoiding freeze/thaw cycles.

NOTE

For Research Use Only. Not for diagnostic, therapeutics, prophylactic or in vivo use.