

DATASHEET

Beta-3 Adrenergic Receptor Rabbit Polyclonal Antibody

CAT. NO. APA08523

KEY FEATURES

Target	Beta-3 Adrenergic Receptor	Source / Host	Rabbit
Reactivity	Human, Mouse, Rat	Clonality	Polyclonal
Applications	WB	Conjugation	Unconjugated
Form / Buffer	Liquid in 0.42% Potassium phosphate, 0.87% Sodium chloride, pH 7.3, 30% glycerol, and 0.01% sodium azide.		Storage at-20°C

BACKGROUND

G protein-coupled receptor for catecholamines that couples to both G(s) and G(i) proteins, leading to either activation or inhibition of adenylate cyclase and cAMP-dependent pathway, respectively and G(i) proteins, leading to either activation or inhibition of adenylate cyclase and cAMP-dependent pathway, respectively . The rank order of potency for physiological agonists is norepinephrine > epinephrine . Involved in the regulation of thermogenesis and lipolysis in brown and white adipose tissue, after coupling to G(s) proteins and stimulation of the cAMP-PKA axis . Also activates lipolytic process by coupling to G(i) proteins and consequent initiation of the ERK1/2 MAP kinase cascade . Participates in relaxation of the blood vessels and the urinary bladder .

APPLICATION

To ensure optimal assay performance, AREX recommends conducting reagent titration tailored to each testing system for optimal detection results.

WB	1:500 - 1:1000
----	----------------

*Results are sample-specific. Please refer to your local assay conditions and test parameters for reference.

PRODUCT OVERVIEW

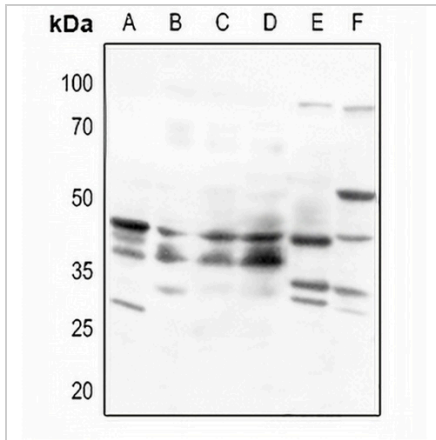
Description	Rabbit polyclonal antibody to Beta-3 Adrenergic Receptor
Specificity	Recognizes endogenous levels of Beta-3 Adrenergic Receptor protein.
Antibody Type	Primary antibody
Immunogen	KLH-conjugated synthetic peptide encompassing a sequence within the center region of human Beta-3 Adrenergic Receptor. The exact sequence is proprietary.
Purification	The antibody was purified by immunogen affinity chromatography.
Molecular Weight	Predicted: 43 kD; Observed: 44; 68 kD
Form/Buffer	Liquid in 0.42% Potassium phosphate, 0.87% Sodium chloride, pH 7.3, 30% glycerol, and 0.01% sodium azide.
Alternative Names	ADRB3R; B3AR; Beta-3 adrenergic receptor; Beta-3 adrenoreceptor; Beta-3 adrenoceptor
Gene Symbol	ADRB3
Entrez Gene	155(Human); 11556(Mouse); 25645(Rat)
SwissProt	P13945(Human); P25962(Mouse); P26255(Rat)

*AREX continuously optimizes our products. Webpage content may not reflect the latest updates. For inquiries, please contact info@arexbio.com or your local distributor.

*Clone Number, Reactivity, Source/Host and Clonality can be found in the product name and Key Features section above.

DATASHEET**Beta-3 Adrenergic Receptor Rabbit Polyclonal Antibody**

CAT. NO. APA08523

DATA

Western blot analysis of Beta-3 Adrenergic Receptor expression in HEK293T (A), HeLa (B), HepG2 (C), A2780 (D), mouse kidney (E), rat liver (F) whole cell lysates. (Predicted band size: 43 kDa; Observed band size: 44; 68 kDa)

STORAGE

Store at 4°C short term. For long term storage, store at -20°C, avoiding freeze/thaw cycles.

NOTE

For Research Use Only. Not for diagnostic, therapeutics, prophylactic or in vivo use.