

**DATASHEET**

**CstF-50 Rabbit Polyclonal Antibody**

CAT. NO. APA08588

**KEY FEATURES**

Target	CstF-50	Source / Host	Rabbit
Reactivity	Human, Mouse, Rat, Bovine, Pig	Clonality	Polyclonal
Applications	WB, IHC	Conjugation	Unconjugated
Form / Buffer	Liquid in 0.42% Potassium phosphate, 0.87% Sodium chloride, pH 7.3, 30% glycerol, and 0.01% sodium azide.		Storage at -20°C

**BACKGROUND**

One of the multiple factors required for polyadenylation and 3'-end cleavage of mammalian pre-mRNAs . May be responsible for the interaction of CSTF with other factors to form a stable complex on the pre-mRNA .

**APPLICATION**

To ensure optimal assay performance, AREX recommends conducting reagent titration tailored to each testing system for optimal detection results.

WB	1:500 - 1:1000
IHC	1:100 - 1:200

\*Results are sample-specific. Please refer to your local assay conditions and test parameters for reference.

**PRODUCT OVERVIEW**

Description	Rabbit polyclonal antibody to CstF-50
Specificity	Recognizes endogenous levels of CstF-50 protein.
Antibody Type	Primary antibody
Immunogen	KLH-conjugated synthetic peptide encompassing a sequence within the N-term region of human CstF-50. The exact sequence is proprietary.
Purification	The antibody was purified by immunogen affinity chromatography.
Molecular Weight	Predicted: 48 kD; Observed: 50 kD
Form/Buffer	Liquid in 0.42% Potassium phosphate, 0.87% Sodium chloride, pH 7.3, 30% glycerol, and 0.01% sodium azide.
Alternative Names	Cleavage stimulation factor subunit 1; CF-1 50 kDa subunit; Cleavage stimulation factor 50 kDa subunit; CSTF 50 kDa subunit; CstF-50
Gene Symbol	CSTF1
Entrez Gene	1477(Human); 67337(Mouse); 311670(Rat)
SwissProt	Q05048(Human); Q99LC2(Mouse); Q5BJQ6(Rat)

\*AREX continuously optimizes our products. Webpage content may not reflect the latest updates. For inquiries, please contact [info@arexbio.com](mailto:info@arexbio.com) or your local distributor.

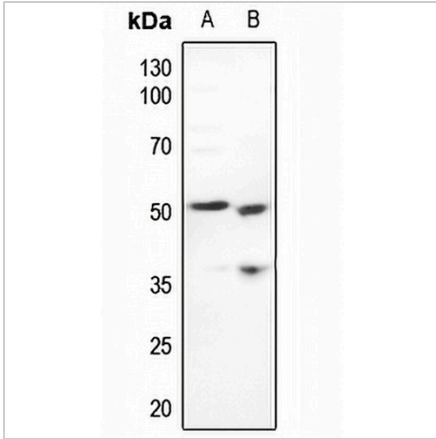
\*Clone Number, Reactivity, Source/Host and Clonality can be found in the product name and Key Features section above.

**DATASHEET**

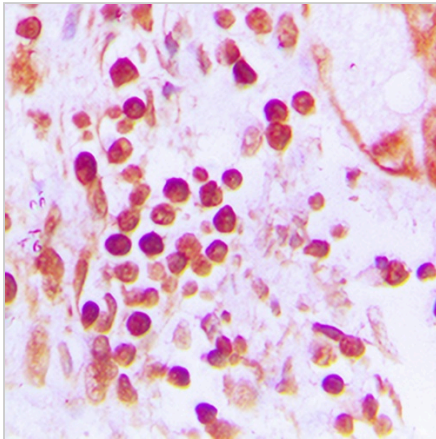
**CstF-50 Rabbit Polyclonal Antibody**

CAT. NO. APA08588

**DATA**



Western blot analysis of CstF-50 expression in H446 (A), mouse kidney (B) whole cell lysates. (Predicted band size: 48 kD; Observed band size: 50 kD)



Immunohistochemical analysis of CstF-50 staining in human prostate cancer formalin fixed paraffin embedded tissue section. The section was pre-treated using heat mediated antigen retrieval with sodium citrate buffer (pH 6.0). The section was then incubated with the antibody at room temperature and detected using an HRP conjugated compact polymer system. DAB was used as the chromogen. The section was then counterstained with haematoxylin and mounted with DPX.

**STORAGE**

Store at 4°C short term. For long term storage, store at -20°C, avoiding freeze/thaw cycles.

**NOTE**

For Research Use Only. Not for diagnostic, therapeutics, prophylactic or in vivo use.