

## DATASHEET

# CTBP2 Rabbit Polyclonal Antibody

CAT. NO. APA08589

### KEY FEATURES

Target	CTBP2	Source / Host	Rabbit
Reactivity	Human, Mouse, Rat, Bovine	Clonality	Polyclonal
Applications	WB, IHC, IF/ICC	Conjugation	Unconjugated
Form / Buffer	Liquid in 0.42% Potassium phosphate, 0.87% Sodium chloride, pH 7.3, 30% glycerol, and 0.01% sodium azide.		Storage at -20°C

### BACKGROUND

Corepressor targeting diverse transcription regulators. Functions in brown adipose tissue (BAT) differentiation .

### APPLICATION

To ensure optimal assay performance, AREX recommends conducting reagent titration tailored to each testing system for optimal detection results.

WB	1:500 - 1:1000
IHC	1:100 - 1:200
IF/ICC	1:100 - 1:500

\*Results are sample-specific. Please refer to your local assay conditions and test parameters for reference.

### PRODUCT OVERVIEW

Description	Rabbit polyclonal antibody to CTBP2
Specificity	Recognizes endogenous levels of CTBP2 protein.
Antibody Type	Primary antibody
Immunogen	KLH-conjugated synthetic peptide encompassing a sequence within the C-term region of human CTBP2. The exact sequence is proprietary.
Purification	The antibody was purified by immunogen affinity chromatography.
Molecular Weight	Predicted: 48 kD; Observed: 48 kD
Form/Buffer	Liquid in 0.42% Potassium phosphate, 0.87% Sodium chloride, pH 7.3, 30% glycerol, and 0.01% sodium azide.
Alternative Names	C-terminal-binding protein 2; CtBP2
Gene Symbol	CTBP2
Entrez Gene	1488(Human); 13017(Mouse); 81717(Rat)
SwissProt	P56545(Human); P56546(Mouse); Q9EQH5(Rat)

\*AREX continuously optimizes our products. Webpage content may not reflect the latest updates. For inquiries, please contact [info@arexbio.com](mailto:info@arexbio.com) or your local distributor.

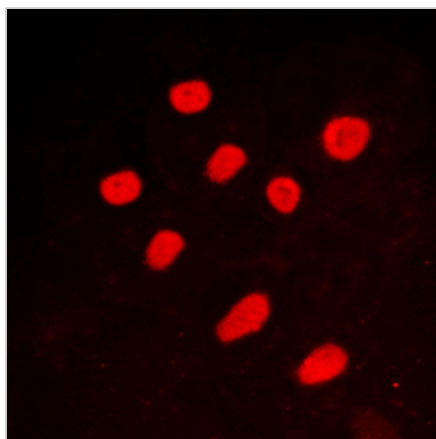
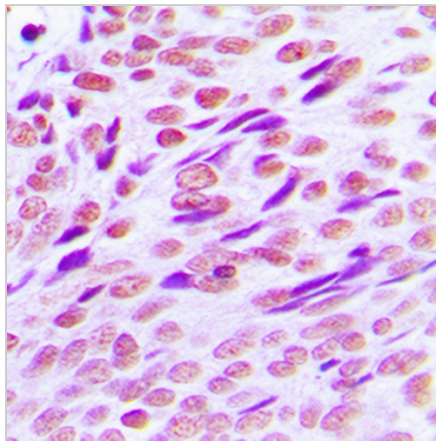
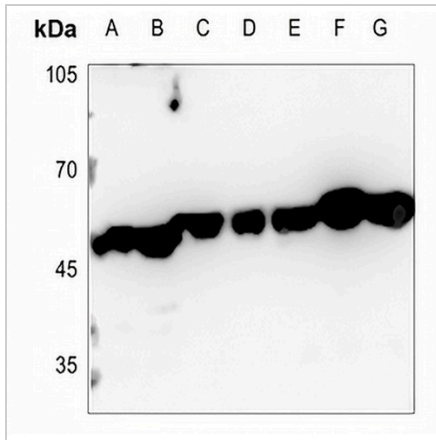
\*Clone Number, Reactivity, Source/Host and Clonality can be found in the product name and Key Features section above.

**DATASHEET**

**CTBP2 Rabbit Polyclonal Antibody**

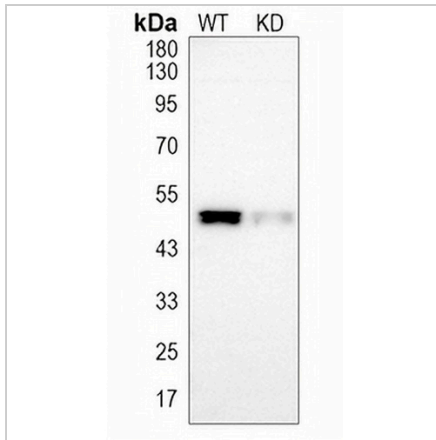
CAT. NO. APA08589

**DATA**



**DATASHEET****CTBP2 Rabbit Polyclonal Antibody**

CAT. NO. APA08589

**DATA (CONTINUED)**

Western blot analysis of CTBP2 expression in wild type (WT) and knockdown (KD) HT1080 cell lysates.

**STORAGE**

Store at 4°C short term. For long term storage, store at -20°C, avoiding freeze/thaw cycles.

**NOTE**

For Research Use Only. Not for diagnostic, therapeutics, prophylactic or in vivo use.