

DATASHEET

GCKR Rabbit Polyclonal Antibody

CAT. NO. APA08619

KEY FEATURES

Target	GCKR	Source / Host	Rabbit
Reactivity	Human, Mouse, Rat, Monkey	Clonality	Polyclonal
Applications	WB	Conjugation	Unconjugated
Form / Buffer	Liquid in 0.42% Potassium phosphate, 0.87% Sodium chloride, pH 7.3, 30% glycerol, and 0.01% sodium azide.		Storage at-20°C

BACKGROUND

Regulates glucokinase (GCK) by forming an inactive complex with this enzyme by forming an inactive complex with this enzyme . Acts by promoting GCK recruitment to the nucleus, possibly to provide a reserve of GCK that can be quickly released in the cytoplasm after a meal . The affinity of GCKR for GCK is modulated by fructose metabolites: GCKR with bound fructose 6-phosphate has increased affinity for GCK, while GCKR with bound fructose 1-phosphate has strongly decreased affinity for GCK and does not inhibit GCK activity .

APPLICATION

To ensure optimal assay performance, AREX recommends conducting reagent titration tailored to each testing system for optimal detection results.

WB	1:500 - 1:1000
----	----------------

*Results are sample-specific. Please refer to your local assay conditions and test parameters for reference.

PRODUCT OVERVIEW

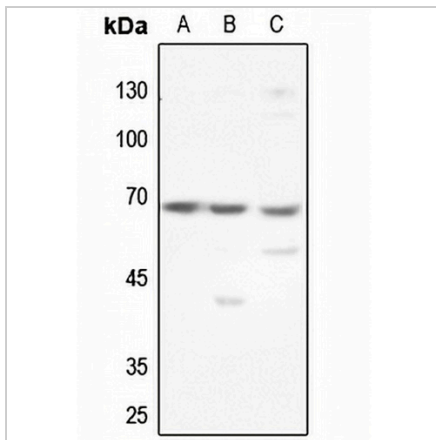
Description	Rabbit polyclonal antibody to GCKR
Specificity	Recognizes endogenous levels of GCKR protein.
Antibody Type	Primary antibody
Immunogen	KLH-conjugated synthetic peptide encompassing a sequence within the center region of human GCKR. The exact sequence is proprietary.
Purification	The antibody was purified by immunogen affinity chromatography.
Molecular Weight	Predicted: 68 kD; Observed: 68 kD
Form/Buffer	Liquid in 0.42% Potassium phosphate, 0.87% Sodium chloride, pH 7.3, 30% glycerol, and 0.01% sodium azide.
Alternative Names	Glucokinase regulatory protein; GKRP; Glucokinase regulator
Gene Symbol	GCKR
Entrez Gene	2646(Human); 231103(Mouse); 25658(Rat)
SwissProt	Q14397(Human); Q91X44(Mouse); Q07071(Rat)

*AREX continuously optimizes our products. Webpage content may not reflect the latest updates. For inquiries, please contact info@arexbio.com or your local distributor.

*Clone Number, Reactivity, Source/Host and Clonality can be found in the product name and Key Features section above.

DATASHEET**GCKR Rabbit Polyclonal Antibody**

CAT. NO. APA08619

DATA

Western blot analysis of GCKR expression in HEK293T (A), HeLa (B), HGC27 (C) whole cell lysates. (Predicted band size: 68 kD; Observed band size: 68 kD)

STORAGE

Store at 4°C short term. For long term storage, store at -20°C, avoiding freeze/thaw cycles.

NOTE

For Research Use Only. Not for diagnostic, therapeutics, prophylactic or in vivo use.