

DATASHEET

Kv9.2 Rabbit Polyclonal Antibody

CAT. NO. APA08641

KEY FEATURES

Target	Kv9.2	Source / Host	Rabbit
Reactivity	Human, Mouse, Rat	Clonality	Polyclonal
Applications	WB, IF/ICC	Conjugation	Unconjugated
Form / Buffer	Liquid in 0.42% Potassium phosphate, 0.87% Sodium chloride, pH 7.3, 30% glycerol, and 0.01% sodium azide.		Storage at -20°C

BACKGROUND

Potassium channel regulatory subunit that modulate the delayed rectifier voltage-gated potassium channel activity of KCNB1 and KCNB2 by altering their kinetics, expression levels, and shifting the half-inactivation potential to more polarized values. While it does not form functional channels on its own, it can form functional heterotetrameric channels with KCNB1 and KCNB2. Each regulatory subunit has unique regulatory properties that can lead to extensive inhibition, significant changes in kinetics, and/or substantial shifts in the voltage dependencies of the inactivation process.

APPLICATION

To ensure optimal assay performance, AREX recommends conducting reagent titration tailored to each testing system for optimal detection results.

WB	1:500 - 1:1000
IF/ICC	1:50 - 1:200

*Results are sample-specific. Please refer to your local assay conditions and test parameters for reference.

PRODUCT OVERVIEW

Description	Rabbit polyclonal antibody to Kv9.2
Specificity	Recognizes endogenous levels of Kv9.2 protein.
Antibody Type	Primary antibody
Immunogen	KLH-conjugated synthetic peptide encompassing a sequence within the center region of human Kv9.2. The exact sequence is proprietary.
Purification	The antibody was purified by immunogen affinity chromatography.
Molecular Weight	Predicted: 54 kD; Observed: 54 kD
Form/Buffer	Liquid in 0.42% Potassium phosphate, 0.87% Sodium chloride, pH 7.3, 30% glycerol, and 0.01% sodium azide.
Alternative Names	KIAA1144; Potassium voltage-gated channel subfamily S member 2; Delayed-rectifier K(+) channel alpha subunit 2; Voltage-gated potassium channel subunit Kv9.2
Gene Symbol	KCNS2
Entrez Gene	3788(Human); 16539(Mouse); 66022(Rat)
SwissProt	Q9ULS6(Human); O35174(Mouse); Q9ER26(Rat)

*AREX continuously optimizes our products. Webpage content may not reflect the latest updates. For inquiries, please contact info@arexbio.com or your local distributor.

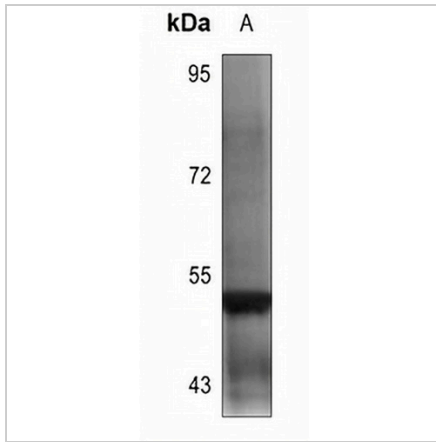
*Clone Number, Reactivity, Source/Host and Clonality can be found in the product name and Key Features section above.

DATASHEET

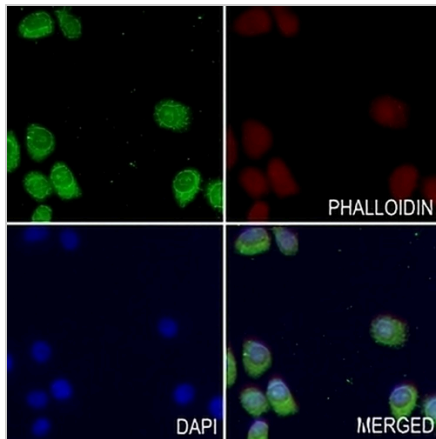
Kv9.2 Rabbit Polyclonal Antibody

CAT. NO. APA08641

DATA



Western blot analysis of Kv9.2 expression in A2780 (A) whole cell lysates. (Predicted band size: 54 kD; Observed band size: 54 kD)



Immunofluorescent analysis of Kv9.2 staining in SGC7901 cells. Formalin-fixed cells were permeabilized with 0.1% Triton X-100 in TBS for 5-10 minutes and blocked with 3% BSA-PBS for 30 minutes at room temperature. Cells were probed with the primary antibody in 3% BSA-PBS and incubated overnight at 4 °C in a humidified chamber. Cells were washed with PBST and incubated with a AREX® Fluor 488 -conjugated secondary antibody (green) in PBS at room temperature in the dark. Phalloidin - AREX® Fluor 594 was used to stain Actin filaments (red). DAPI was used to stain the cell nuclei (blue).

STORAGE

Store at 4°C short term. For long term storage, store at -20°C, avoiding freeze/thaw cycles.

NOTE

For Research Use Only. Not for diagnostic, therapeutics, prophylactic or in vivo use.